



**Inland Revenue**  
Te Tari Taake

**IR 375**  
July 2011

# GST guide

## Working with GST



## www.ird.govt.nz

Go to our website for information, services and tools.

- **Secure online services** – login to check your account information, file an employer schedule, confirm personal tax summaries and update your family details and income.
- **Get it done online** – complete and send us forms and returns, make payments, make an appointment to see us and give us feedback.
- **Work it out** – use our calculators, worksheets and tools to help you manage your tax business like checking your tax code, or your filing and payment dates.
- **Forms and guides** – download our guides, and print forms to post to us.

You can also check out our newsletters and bulletins, and have your say on items for public consultation.

## Tool for business

This online interactive tool lets you find out what you need to know for your business. Go to [www.ird.govt.nz](http://www.ird.govt.nz) (keyword: tfb).

## How to get our forms and guides

You can view copies of all our forms and guides mentioned in this guide by going to [www.ird.govt.nz](http://www.ird.govt.nz) and selecting “Forms and guides”. You can also request copies by calling 0800 257 773.

## For more information

Go to [www.ird.govt.nz/gst](http://www.ird.govt.nz/gst) for more information on the topics covered in this guide.

## Terms we use

### Adjustment

A change you need to make to income or expenses to allow for the private use of an item.

### Apportionment

Calculation of the part of an asset, income or expense that is used privately and for business.

### Associated persons

These are:

- companies controlled by the same persons
- companies and persons with a 25% or greater interest in the company
- partnerships, partners and associates of partners
- relatives by blood, marriage or adoption, to the second degree (including people in a de facto relationship)

- trustees of a trust and persons who have benefited or are eligible to benefit under the trust
- trustees and the settlor of a trust, except where the trustee is a charitable or non-profit body
- trustees of two trusts which have a common settlor
- two persons who are each associated with a third person.

A New Zealand branch or division of a non-resident entity is treated as a separate entity from its non-resident head office for any imported services supplied from the non-resident to the New Zealand branch or division.

- ▶ To determine whether two companies or a company and an individual are associated, interest held by any person in a company must be aggregated with interests held by associates of that person.

### Consideration

Money, compensation or reward, for doing or not doing, an action in return for a supply of goods or services.

### Market value

The amount that similar goods would cost at the same time in New Zealand, GST-inclusive.

### Registered person

A person registered or liable to be registered for GST.

### Return (verb)

Account for.

### Revenue account

Consumables, items which aren't capital/major assets.

### Tax invoice

An invoice, from the person who supplies the goods or services, which meets the requirements of the GST Act 1985.

### Taxable activity

Any activity carried out continuously or regularly by a business, trade, manufacturer, professional person, association or club. It includes any activity that supplies or intends to supply, goods and services to someone else for a consideration but not necessarily for profit. It doesn't include: working for salary and wages, being a company director, hobby activities or any private recreation pursuit, private transactions such as the occasional sale of household or domestic items, or making exempt supplies.

### Taxable supplies

Any goods or services you provide while carrying on your taxable activity.

### Turnover

The total value of the taxable supplies in all your taxable activity, including grants and subsidies you receive or barter transactions, excluding any GST. This is not your profit because your expenses aren't deducted when determining your turnover.

# Contents

<b>www.ird.govt.nz</b>	<b>2</b>	<b>Part 5 – Supplies</b>	<b>36</b>
<b>Tool for business</b>	2	Exempt supplies	36
<b>How to get our forms and guides</b>	2	Zero-rated supplies	36
<b>For more information</b>	2	Not eligible for zero-rating	37
<b>Terms we use</b>	2	Special supplies	37
<b>Introduction</b>	<b>4</b>	<b>Part 6 – 1 October 2010 GST rate change</b>	<b>44</b>
GST rate increase	4	Other adjustments required due to the GST rate change	44
GST registration	4	Finance lease payments and further GST rate change adjustments	44
<b>Part 1 – Explaining GST</b>	<b>5</b>	<b>Part 7 – Your rights and obligations</b>	<b>45</b>
What GST is charged on	5	If you have a complaint about our service	45
Understanding your basic GST requirements	6	Privacy	45
What GST isn't charged on	7	Shortfall penalties	45
Record keeping	7	Audits	45
What information do I give to my customers?	9	Offences and penalties	45
<b>Part 2 – How to complete and file GST returns</b>	<b>10</b>	<b>Part 8 – Quick reference checklist</b>	<b>46</b>
The return filing process	10	<b>Part 9 – Services you may need</b>	<b>47</b>
The GST return	11	0800 self-service numbers	47
Completing your return	11	Business tax information officers and kaitakawaenga Māori	47
Filing your GST return online	11	<i>Business tax update</i>	47
Online GST filing demonstration	11	<i>Tax information bulletin (TIB)</i>	47
Which form do I use?	11	How to make payments	47
GST 101A	12	Need to talk to us?	48
GST 103	14	Customer service quality monitoring	48
Adjustments	18	Postal addresses	48
Filing your GST return	20	Index	49
If you don't file your return, or file it late	20		
If you don't make your payment, or pay late	21		
Correcting an error in your GST return	21		
<b>Part 3 – Cancelling your GST registration</b>	<b>23</b>		
Should I deregister from GST?	23		
<b>Part 4 – Adjustments</b>	<b>25</b>		
Adjustments for capital or asset items from 1 April 2011	25		
(for adjustments for capital or asset items prior to 1 April 2011 go to <a href="http://www.ird.govt.nz/gst">www.ird.govt.nz/gst</a> )			
Other adjustments	31		

## Introduction

### Key points

- If you're reading this guide we assume you have registered for GST.
- This is an entry level guide.
- For more information, see our contact details at the back of this guide.

This guide tells you how GST works and tells you how the majority of businesses manage their GST obligations.

Read our *GST plus (IR 546)* guide for information on infrequent and/or complex GST issues which will only apply to a limited number of registered persons, or will only occur under certain conditions.

## GST rate increase

The GST rate increased from 12.5% to 15% on 1 October 2010.

You may need to make some adjustments due to this change—see Part 6 of this guide and Part 5 of *GST plus (IR 546)*

## GST registration

If you're reading this guide we assume you've already registered for GST.

You'll fall into one of these two groups:

- your business turns over, or is expected to turn over \$60,000 or more a year (turnover is your total income before expenses and GST), or
- you've decided to register voluntarily for GST.

When you registered you would have received a letter giving:

- your GST number (which may be the same as your IRD number)
- your registration start date
- your accounting basis (the way you claim and pay your GST)
- your taxable period (how often you need to file returns).

▶ If you voluntarily registered for GST, and after reading this guide you decide that registering was a mistake, you may de-register. See Part 3 of this guide for more information about ending your GST registration.

If you haven't registered for GST but you're considering it we advise you to read our factsheet *GST – do you need to register? (IR 365)* first.

# Part 1 – Explaining GST

### Key points

- If you're registered for GST you must add 15% to the sale price.
- When you receive GST from your customers, you hold this money to pass on to us.

## What GST is charged on

GST is a 15% tax on the supply (sale) of most goods and services in New Zealand, most goods imported into New Zealand and some specified imported services. Supplying or making a supply is your taxable activity.

A taxable activity includes these goods and services:

- **services** such as graphic design, hairdressing, mechanical building, painting
- **products** such as clothing or cars, fish and chips
- **experiences** such as bungee jumping, skiing, kayaking, going to the movies
- **professional services** such as legal advice.

### Adding GST to your goods or services

When adding GST to the price of goods and services, multiply the amount by 15% (or 0.15) to get the GST-inclusive price.

If the price already includes GST, multiply it by 3 then divide by 23 to find out the GST amount. Subtract this to get the GST-exclusive amount.

#### Example

Adding GST		Subtracting GST	
Product	\$ 100	Product	\$ 115
	× 15%		× 3 ÷ 23
GST amount	\$ 15	GST amount	\$ 15
Product	\$ 100	Product	\$ 115
Plus GST amount	\$ 15	Less GST amount	\$ 15
GST-inclusive total	\$ 115	GST-exclusive amount	\$ 100

You can also calculate the GST component by dividing the GST-inclusive price by 7.66666666. You must use at least 8 decimal places to calculate the correct GST component as using fewer decimal places can result in an incorrect answer.

Using the fraction method (multiplying by 3 and then dividing by 23) will always provide you with an accurate answer.

## What happens to the GST I collect from my customers and pay on my purchases?

There are two sides to the GST equation:

- You collect GST through the sale of goods and services.
- You pay GST through purchases and business expenses.

When you file your GST return, you work out the difference between the amount of GST you've collected and the amount of GST you've paid.

- If you've paid out more GST than you've collected, you'll receive a GST refund.
- If you've collected more GST than you've paid, you'll need to pay the balance to us by the due date.

You can only charge GST on your sales and income or claim it back on purchases and expenses if you're registered.

- ▶ When you receive GST from your customers, you hold this money to pass on to us. GST is not income for the business and needs to be paid to us when you file your GST return.

## Understanding your basic GST requirements

### Filing GST returns

You're required to file regular GST returns. You can choose how often you do this—monthly, two-monthly or six-monthly. The period you choose is your “taxable period” or “filing frequency”. If you didn't choose a taxable period when you registered we'll put you on the two-monthly option matching your balance date.

You can apply to change your taxable period if this doesn't suit. Write and tell us which filing frequency you prefer. If we approve the change, we'll tell you when to start using your new taxable period—don't change until you hear from us.

- ▶ If you're registering for GST and you're also liable for provisional tax, you'll need to match your GST taxable period with your balance date. For example, if you file your GST returns two-monthly and have a March balance date your taxable periods are April/May, June/July, August/September, October/November, December/January, February/March.

### Monthly

Anyone can choose to file monthly GST returns. Monthly returns may suit you if you're entitled to frequent GST refunds.

### Two-monthly

You can choose to file your returns in odd or even months. Preparing your GST accounts every two months helps keep you on top of your GST requirements. Completing GST returns every two months helps keep in touch with your business's progress.

### Six-monthly

If your business has just a few transactions, this could be an option for you. You can apply for a six-monthly filing frequency if the value of your total sales:

- was less than \$500,000 in the last 12 months, or
- is unlikely to be more than \$500,000 in the next 12 months.

### When to file your returns

You must file your GST return along with any payment due by the 28th of the month following the end of your taxable period. There are two exceptions to this. If your taxable period ends on:

- 30 November, your return and payment will be due on 15 January of the following year
- 31 March, your return and payment will be due on 7 May.

If the due date falls on a weekend or public holiday, the due date is the next working day.

### What are my options for claiming and paying GST?

When you registered for GST you may have already chosen an accounting basis for claiming and returning your GST. The options are the invoice, payments or hybrid basis. If you didn't choose one we'd have put you on the invoice basis.

If you want to change your accounting basis, put your request in writing, telling us which one you'd like to change to.

Accounting basis	Who can use it
Payments basis	A registered person can use this basis if: <ul style="list-style-type: none"> <li>● the total amount of sales in the last 12 months was \$2 million or less, or</li> <li>● the total amount of sales is unlikely to be more than \$2 million in any 12-month period, beginning on the first day of any month.</li> </ul>
Invoice basis	Any registered person can use this basis.
Hybrid basis	Any registered person can use this basis—although it's not commonly used.

### Payments basis

Under the payments basis you account for GST at the end of the taxable period when you make or receive the payment. This helps you manage your cash flow because you only pay us GST after you've received the payment from your customers, and you only claim GST for the purchases and expenses you've paid for.

### Invoice basis

Using the invoice basis, you account for GST at the end of the taxable period when you issued an invoice to your customers or received an invoice from your supplier.

You will:

- pay us the amount of GST shown on the invoices you've given to your customers (whether you've received a payment or not), and
- claim a credit for the amount of GST shown on tax invoices you've received from your suppliers (regardless of whether you've paid your supplier or not).

### Hybrid basis

Under the hybrid basis you account for GST on sales and income using the invoice basis, and account for GST on expenses and purchases when you actually make payment. This method isn't used as much as the other two because it can get complicated.

## What GST isn't charged on

Some goods and services don't have GST added to them. These are:

- sales by an unregistered person
- sales of private property (eg, a car or home not used for business)
- exempt supplies.

### Exempt supplies

GST is not charged on exempt supplies, and they're not included in your GST return. These include:

- financial services such as interest payments on loans or bank fees
- donated products and services which are sold by not-for-profit organisations
- rent paid on a private home
- penalty interest.

▶ You can't claim expenses relating to exempt supplies. You don't show income from the exempt supply in your GST return.

### Zero-rated supplies

Some goods and services aren't exempt supplies, but GST is charged at 0%. For example:

- exported goods
- sales of going concerns (selling or buying a business that will continue to run as the same type of business)
- sale of land.

If you have zero-rated supplies you can claim GST on your expenses.

Include all zero-rated supplies in Box 5 of your return with your total taxable supplies. You also show these zero-rated supplies in Box 6 of your return.

#### Example

Joe's taxable activity is growing and selling apples. He exports some to America.

Joe can claim the full cost of fertilisers and sprays used in the business.

GST isn't charged on the apples Joe sells to America. He enters the income as part of his sales in his GST return and then makes an apportionment between the zero rated supplies and taxable supplies.

For further information on zero-rated supplies see page 36.

## Record keeping

### Key points

- Keep all the paperwork that supports and explains your GST figures.
- Keep business records for seven years.
- Complete records save you time.
- Make sure your business GST number is clearly visible on all your business tax invoices.

Good record keeping ensures that your GST return process runs smoothly. You'll need all the relevant information to complete your return.

You should keep:

- copies of all business invoices you've sent out for payment
- copies of business receipts for items such as petrol and stationery
- copies of all till tapes (received or given).

▶ Keep your business records for seven years, in English, unless we've given you prior approval to use another language.

Decide on a record keeping system that suits you, for example:

- a software programme that will let you enter all your financial information electronically and apply formulas to calculate your GST
- a cashbook to develop your own records for your income, expenses and GST—see example on page 8.

Make sure you have all the relevant invoices, receipts and bank statements for your business. This will help you find items quickly.

You could set up a system by:

- date order
- supplier
- taxable period
- accounting basis (eg, if you use the payments basis, file your paperwork in the month you made the payment).

At some stage we may audit your business. During an audit we look at your GST records and systems. How you document GST on your paperwork and maintain your records is very important.

For example, keeping your zero-rated invoices separate from your other invoices is a good idea because they go in a separate box on your GST return.

## Example: Cashbook

New month on new page

Choose revenue items relevant  
and common to your business

## Cashbook – sales and income

DATE	REFERENCE	INV#	BANK	GST RECEIVED	SALES	GRANTS	FUNDS INTRODUCED (NO GST)	INTEREST (NO GST)	SUNDRY
3 June	Customer (sale)	7	2,000 00	260 87	1,739 13				
5 June	Government (grant)		450 00	58 70		397 30			
8 June	Sale of computer (fixed asset)		1,125 00	146 74					978 26
15 June	Owner – Partner		800 00				800 00		
22 June	Bank interest		15 35					15 35	
25 June	Customer (sale)	8	1,750 00	228 26	1,521 74				
26 June	Commission sales	9	2,500 00	326 09	2,173 91				
	<b>TOTALS</b>		<b>8,640 35</b>	<b>1,020 66</b>	<b>5,434 78</b>	<b>397 30</b>	<b>800 00</b>	<b>15 35</b>	<b>978 26</b>

Use a separate column for GST  
only if you're GST-registeredChoose expense items relevant  
and common to your business

## Cashbook – purchases and expenses

DATE	REFERENCE	CHR	BANK	GST PAID	PURCHASES	COMMERCIAL RENT	MOTOR VEHICLE	WAGES (NO GST)	LOAN REPAYMENT (NO GST)	PRIVATE DRAWINGS (NO GST)	SUNDRY
3 June	Stock Ltd (purchase)	100	3,500 00	456 52	3,043 48						
3 June	H. Elp (wages)	101	881 00					881 00			
8 June	Landlord (commercial rent)	102	750 00	97 83		652 17					
15 June	Petrol co	103	55 00	6 52			43 48			5 00	
22 June	PAYE paid to IRD	104	195 00					195 00			
25 June	Partner drawings	105	400 00							400 00	
28 June	GST paid to IRD	106	310 98								310 98
											10 25
30 June	Bank fees	DD	10 25								10 25
30 June	Loan	AP	800 00						800 00		
	<b>TOTALS</b>		<b>6,902 23</b>	<b>560 87</b>	<b>3,043 48</b>	<b>652 17</b>	<b>43 48</b>	<b>1,076 00</b>	<b>800 00</b>	<b>405 00</b>	<b>321 23</b>

Combined totals should equal the total in the bank column

Put uncommon items in the sundry column rather than setting  
up a new expense column



## What information do I give to my customers?


As a GST-registered person you'll need to give your customers tax invoices.

The information you put on a tax invoice depends on the value of the goods or services being sold.

- If a sale is less than \$50 you can issue or receive a receipt instead of a tax invoice, eg, a till receipt.
- If you make a sale or purchase of \$50 or more you'll need to give or keep a tax invoice.

### Examples

Swinton Appliances Ltd



Jackson Street PO Box 99 999 Phone: (04) 999 9999  
 PETONE PETONE Fax: (04) 988 8889

Tax Invoice

To: Mereana's Place Main Street PETONE

GST number 108-765-432

Date: 08 November 2010

Quantity	Description of goods and services	Unit price	Total
1	Gas Oven	\$1,400.00	\$1,400.00
Plus goods and services tax			\$210.00
<b>Total amount due</b>			<b>\$1,610.00</b>

Name and address of the supplier

The words "tax invoice"

Supplier's GST registration number

Date of issue

Name and address of the recipient

Description of the goods and services supplied

Amount, excluding tax, charged for the supply

Quantity of the goods supplied

GST charged

Total amount payable

Foreshore Properties Limited

TAX INVOICE

Private Bag  
PETONE

GST No. 102-345-678

Date: 13 SEPTEMBER 2011

To: MEREANA'S PLACE  
MAIN ROAD  
PETONE

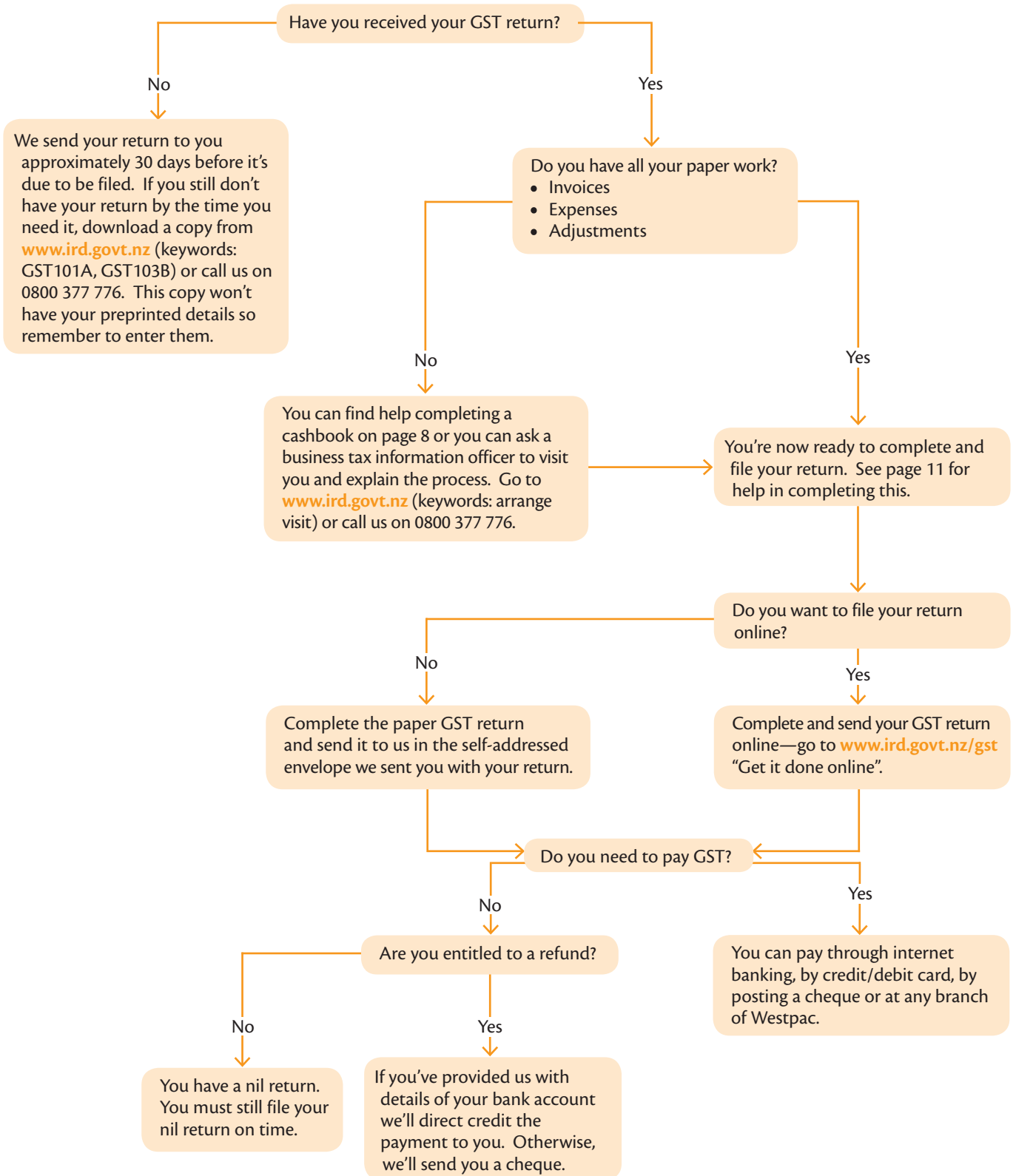
Rent on the premises at Main Road, Petone for the month ending 31 October 2010, and for each successive month up to and including 31 December 2011.

Payment due on the twentieth (20th) day of each month commencing 20 October 2010.

\$1,200 per month including goods and services tax.  
 Total for 15 months: \$18,000 including GST.

## Part 2 – How to complete and file GST returns

### The return filing process



## The GST return

To complete your return work out the **difference** between:

- the GST you've added to items or services you sell, and
- the GST you can claim back from business expenses and purchases.

Remember, your business sales represent your income and your business purchases represent some of your expenses.

## Completing your return

Read the following pages to help you complete your return. The steps are the same whether you're completing your return online (see below) or on paper.

### Filing your GST return online

Our online service makes it easier for you to meet your GST requirements. It's simple, secure and immediate.

Our GST online service offers you:

- **Convenience:** By completing your GST return online, you can avoid postage costs and delays. When combined with electronic banking, the entire online process gives you greater certainty.
- **Accuracy:** You're less likely to make a mistake when you complete your return online because you can't submit it until it's complete and the calculations are correct.
- **Proof of submission:** You'll receive immediate confirmation, including the date and time, that we've received your return.
- **Faster refunds:** We process online returns faster than paper-based returns.
- **Ability to advise of any changes or extra details at the same time:** Most returns are now being scanned and we may not always pick up any comments written on the return or attachments.

## Online GST filing demonstration

Filing your GST online is quicker, accurate and more convenient. Go to our website [www.ird.govt.nz](http://www.ird.govt.nz) "Secure online services" "Demonstrations" "GST filing demonstration" to see an online demonstration which you can walk through at your own pace. It's simple to follow and takes less than 10 minutes.

## Which form do I use?

You file a simple GST 101A if you're not liable for provisional tax—see page 12.

You file a form in the GST 103 series if you're liable for provisional tax—see page 14.

## GST 101A

Use the following worksheets to help complete your return. First, sort your information into two separate groups:

- GST on sales
- GST on expenses.

▶ If, at any time, you have difficulty completing your GST return contact your tax agent/accountant or call us on 0800 377 776.

Your personal details are printed in the top panel. They include your GST number, the period covered by the return, due date, mailing address and daytime phone number. You can update your details in Boxes 3 and 4. If you're sending in a return that doesn't have your details and return period preprinted, please make sure you fill in these details.

If you're completing your return online you'll need to complete these details in Boxes 1 to 4.

### Work out GST on sales and income

Box	Action	Completed ✓
5	Add up all sales and income that form part of your taxable activity plus any zero-rated supplies. This includes the GST amount of the sales and income. Enter this figure in Box 5 on the return.	
6	Separate out the amount of zero-rated supplies. (You're most likely to have zero-rated supplies if you're an exporter.) If you don't have any zero-rated supplies go to the next step. Enter the total amount of zero-rated supplies in Box 6 on the return.	
9	Use your calculation sheet (see page 19) to work out the amount you need to enter if you're making adjustments (see page 25). If you're not making any adjustments go to the next step. Enter any adjustments in Box 9 of the return.	

### Work out GST on purchases and expenses

Box	Action	Completed ✓
11	Total all purchases and expenses (including GST). You'll find this information in your cashbook or spreadsheet. Make sure you have tax invoices for your expenses. Enter this figure in Box 11 of the return.	
13	Use your calculation sheet (see page 19) to work out the amount you need to return if you're making any adjustments (see page 25). If you're not making any adjustments go to the next step. Enter any credit adjustments in Box 13 of the return.	

### Work out if you have a GST refund or GST payment

15	Work out the difference between Boxes 10 and 14 on the return to see if you have a GST refund or GST to pay. Enter this figure in Box 15 of the return.	
	If Box 14 is bigger than Box 10 the difference is your GST refund.	Refund
	If Box 10 is bigger than Box 14 the difference is your GST to pay.	Payment
	If the amounts in Boxes 10 and 14 are the same, you have a nil GST return. You don't need to make a payment and you won't receive a refund for this taxable period. Remember, you must still file the GST return by the due date.	Nil balance
	<b>Read and sign the declaration.</b>	

Go to page 18.

Example: GST 101A



Goods and Services Tax Act 1985

Goods and services tax return

For help in completing this return go to www.ird.govt.nz (keyword: IR375)

GST 101A

October 2010

Registration no. 1

Period covered by the return from 2 to

This return and any payment are due

If your correct postal address for GST is not shown above, print it in Box 3.

If your correct daytime phone number is not shown here, print it in Box 4.

Goods and services tax on your sales and income

OFFICE USE ONLY Operator code, Corresp. indicator, Payment attached, Return cat.

5 Total sales and income for the period (including GST and any zero-rated supplies)
6 Zero-rated supplies included in Box 5
7 Subtract Box 6 from Box 5 and enter the difference here
8 Multiply the amount in Box 7 by three (3) and then divide by twenty-three (23)
9 Adjustments from your calculation sheet
10 Add Box 8 and Box 9. This is your total GST collected on sales and income

Goods and services tax on your purchases and expenses

Declaration The information in this return is true and correct and represents my assessment as required under the Tax Administration Act 1994.

11 Total purchases and expenses (including GST) for which tax invoicing requirements have been met - excluding any imported goods
12 Multiply the amount in Box 11 by three (3) and then divide by twenty-three (23)
13 Credit adjustments from your calculation sheet
14 Add Box 12 and Box 13. This is your total GST credit for purchases and expenses
15 Print the difference between Box 10 and Box 14 here

Signature / / Date

If Box 14 is larger than Box 10 the difference is your GST refund (Tick one) Refund
If Box 10 is larger than Box 14 the difference is GST to pay GST to pay
Has payment been made electronically? Yes No



Payment slip

GST 700

Registration number
Return for the period ending

This return and any payment are due

Amount of payment \$

Use the envelope provided to post your return, payment slip and any cheque payment.

Copy your total from Box 15 and enter it here. Include any late payment penalties for this period only.

## GST 103

If you pay provisional tax as well as GST you'll receive a GST 103 form. This will be tailored to your circumstances and you'll only see the sections relevant to you.

Use the following worksheets to help complete the form. First, sort your information into two separate groups:

- GST on sales
- GST on expenses.

▶ If, at any time, you have difficulty completing your GST return, contact your tax agent/accountant or call us on 0800 377 776.

Your personal details are printed in the top panel. They include your GST number, the period covered by the return, due date, mailing address and daytime phone number. You can update your details in Boxes 3 and 4. If you're sending in a return that doesn't have your details and return period preprinted, please make sure you fill in these details.

If you're completing the return online you'll need to complete these details in Boxes 1 to 4.

### Page 1 of your GST 103

Work out GST on sales and income		
Box	Action	Completed ✓
5	Add up all sales and income that form part of your taxable activity plus any zero-rated supplies. Include the GST amount of the sales and income. Enter this figure in Box 5 on the return.	
6	Separate out the amount of zero-rated supplies. (You're most likely to have zero-rated supplies if you're an exporter.) If you don't have any zero-rated supplies go to the next step. Enter the total amount of zero-rated supplies in Box 6 of the return.	
9	Use your calculation sheet (see page 19) to work out the amount you need to enter if you're making adjustments (see page 25). If you're not making any adjustments, go to the next step. Enter any adjustments in Box 9 of the return.	
Work out GST on purchases and expenses		
Box	Action	Completed ✓
11	Total all purchases and expenses (including GST). You'll find this information in your cashbook or spreadsheet. Make sure you have tax invoices for your expenses. Enter this figure in Box 11 of the return.	
13	Use your calculation sheet (see page 19) to work out the amount you need to return if you're making any adjustments (see page 25). If you're not making any adjustments, go to the next step. Enter any credit adjustments in Box 13 of the return.	
Work out if you have a GST refund or GST payment		
15	Work out the difference between Boxes 10 and 14 to see if you have a GST refund or GST to pay. Enter this figure in Box 15 of the return.	
	If Box 14 is bigger than Box 10 the difference is your GST refund.	Refund
	If Box 10 is bigger than Box 14 the difference is your GST to pay.	Payment
	If the amounts in Boxes 10 and 14 are the same, you have a nil GST return. You don't need to make a payment and you won't receive a refund for this taxable period. Remember, you must still file the GST return by the due date.	Nil balance



## Page 2 of your GST 103

This part of the form relates to your provisional tax.

The following instructions relate to all the boxes on the full return. If you receive a preprinted return, only the boxes you need to complete will be on it.

### Work out provisional tax calculation using the ratio option

Box	Action	Completed ✓
16	Transfer the total sales and income from Box 5 on page 1. Enter this figure in Box 16 of the return.	
17	If you file your returns monthly, take the total sales and income figure from Box 5 of your previous month's return. Enter this figure in Box 17 of the return.	
19	If you file GST returns for more than one branch or division of your business, get the total sales and income from Box 5 of their returns. Remember to include amounts from the previous month's returns if they file one-monthly. Enter this total figure in Box 19 of the return.	
21	If you've sold an asset during the taxable period, (or the last two months if you file monthly) this will reduce the amount of your total GST supplies for calculating your provisional tax. You can make this adjustment if: <ul style="list-style-type: none"> <li>the asset wasn't revenue account property</li> <li>the value of the asset is greater than <ul style="list-style-type: none"> <li>an amount equal to 5% of the total taxable supplies in the last 12 months, or</li> <li>\$1,000.</li> </ul> </li> </ul> Enter this figure in Box 21 of the return.	
22	Use the ratio percentage on the notice you received from us. Enter this amount in the box to the left of Box 23 of the return if it's not already printed there.	

### Work out your provisional tax calculation

Box	Action	Completed ✓
24	Check your income tax statement or notice of assessment to see if you're due to make a provisional tax instalment. If an instalment isn't due, do you want to make a voluntary provisional tax payment? Enter either your compulsory instalment or voluntary payment figure in Box 24 of the return.	
25	If a refund shows at Box 15, do you want to use it to pay your provisional tax? Enter the amount you want to transfer to provisional tax in Box 25 of the return.	
26	Does Box 15 show GST to pay? Enter this figure in Box 27 of the return.	
27	Add the amount in Box 26 to Box 27 to get the total amount of GST and provisional tax to pay. Enter this figure in Box 28 of the return.	
	<b>Read and sign the declaration.</b>	



Example: Page 2 GST 103B

Part 2 – Provisional tax calculation when using the ratio option

Complete Boxes 16 to 23 only if this is a compulsory payment period, otherwise go to Box 24

Enter total sales and income from Box 5 on page 1 16 \$

Do you file GST returns monthly? If so enter total sales and income (Box 5) from your previous month's return, otherwise enter zero (0) 17 \$

Add Box 16 and Box 17 18 \$

Do you file GST returns for more than one branch or division? If so enter total sales and income (from Box 5) from all other branches/divisions, otherwise enter zero (0). (Remember to include amounts from the previous month if the other branches file one-monthly) 19 \$

Add Box 18 and Box 19 20 \$

If you've sold an asset in the last two months, you can make an adjustment for the asset's worth, if it's over \$1,000, or it's over 5% of your total taxable supplies in the last 12 months, whichever is greater. Enter the amount here, otherwise enter zero (0) 21 \$

Subtract Box 21 from Box 20 22 \$

Enter your ratio % (from your notification letter)

Ratio percentage input field

Multiply the amount in Box 22 by your ratio percentage (this is printed on your notification letter). This is your provisional tax instalment due—copy this amount to Box 24 23 \$

Part 3 – Payment calculation

Compulsory provisional tax period – Provisional tax instalment due or Voluntary provisional tax period – Total voluntary amount you would like to make 24 \$

If Box 15 from page 1 is a refund, enter the amount you would like to transfer to provisional tax, otherwise enter zero (0) 25 \$

Subtract Box 25 from Box 24. If Box 25 is larger than Box 24, enter zero (0) 26 \$

If Box 15 from page 1 is GST to pay enter amount here, otherwise enter zero (0) 27 \$

Add Box 26 and Box 27 This is your GST and/or provisional tax to pay 28 \$

Has payment been made electronically? Yes No

OFFICE USE ONLY section with checkboxes for Operator code, Corresp. indicator, Payment attached, Return cal.

Declaration: The information in this return is true and correct and represents my assessment as required under the Tax Administration Act 1994.

Signature and Date fields



Payment slip

GST 970

Registration number
Return for the period ending

This return and any payment are due

Amount of payment \$

Use the envelope provided to post your return, payment slip and any cheque payment.

Copy your total from Box 28 and enter it here. Include any late payment penalties for this period only.

## Adjustments

### Key point

- There is often a crossover between personal and business use of goods and services. You need to adjust your GST return to reflect this.

In some instances, you may need to calculate a GST adjustment to either pay GST, eg, for a business asset used privately, or claim back GST that’s already been paid, eg, for a private asset used for business. See part 4 of this guide.

You may also need to make adjustments for certain late claims and credit or debit notes that include GST at the old rate of 12.5%.

For other adjustments, you’ll need to work out the private or exempt portion of various income and expenses.

Many small businesses get help from their accountant/tax agent for adjustments. If you don’t have an accountant/tax agent, see page 25 for more information, go to [www.ird.govt.nz/gst](http://www.ird.govt.nz/gst) or call us on 0800 377 776.

### Credit and debit notes

You may have to include credit and debit notes in your calculations when you’re making an adjustment.

- Credit notes are issued when the price of a supply has reduced after a tax invoice was issued, eg, the return of faulty goods.
- Debit notes are issued when the price increases after a tax invoice has been issued.

### Example


<b>CREDIT NOTE</b>								
<div style="border: 1px solid black; padding: 5px; margin-bottom: 10px;"> <b>Hello Electronics Limited</b>                      P.O. Box 999 Sylvester Street, Wellington                      Ph: (04) 999 9990 Fax: (04) 998 9899                      Email: hello.electronics@aria.co.nz                 </div> <b>Computer Racer Limited</b> 100 Ellmers Street Wellington Attention: Mr Robson Tel (04) 997 9999 Fax: (04) 996 9999			GST Number: 555-555-555 Credit Note no: CM1002 Date: 31/03/2011 Your Ref: PO S100 Our Ref: IN1001 Terms: Cash Sales Person: Smart Jo Job No: JB1000					
			SN	Product ID	Description	Qty UM	Unit Price	Amount
			To adjust IN1001 item 1 being unit overbilled at \$2,040.00 each instead of \$2,000.00 each					
			1	CNB3000	Acme Bell Laptop	2 each	\$40.00	\$80.00
								Total before GST Total GST

### GST adjustments calculation sheet (IR 372)

The IR 372 helps you calculate your GST adjustments. It lists the items which you need to make an adjustment for. Use the sheet to record the adjustments you need to make, then:

- transfer the figures to your GST return
- attach the sheet to your copy of the GST return
- keep full details on how you calculated the items.

#### Example: IR 372



## GST adjustments calculation sheet

**IR 372**  
August 2010

- Use this sheet to calculate the GST on your adjustments for your GST return.
- Please use the *GST guide (IR 375)* to help you work out your adjustments.
- Keep this sheet and full details on how these items have been calculated.

Your name

Period covered by the return     One-monthly     Two-monthly     Six-monthly

from    to

Day    Month    Year                      Day    Month    Year

**Include GST on adjustments in Box 9.**

Private use of business goods and services for annual or period-by-period adjustments	\$ <input style="width: 100px;" type="text"/>
Business assets used privately (a one-off adjustment)	\$ <input style="width: 100px;" type="text"/>
Assets kept after ceasing to be registered	\$ <input style="width: 100px;" type="text"/>
Entertainment expenses (once a year only)	\$ <input style="width: 100px;" type="text"/>
Change of accounting basis	\$ <input style="width: 100px;" type="text"/>
Goods and services used in making exempt supplies for annual or period-by-period adjustments	\$ <input style="width: 100px;" type="text"/>
Adjustments at 12.5% GST rate (such as: debit and credit notes, receiving finance lease payments)	\$ <input style="width: 100px;" type="text"/>
Other (such as: barter, bad debts recovered, exported secondhand goods, insurance payments received)	\$ <input style="width: 100px;" type="text"/>
<b>Total adjustments. Copy this total to Box 9 on your return.</b>	<b>9</b> \$ <input style="width: 100px;" type="text"/>

**Include GST on credit adjustments in Box 13.**

Business use of private/exempt goods and services for annual or period-by-period adjustments	\$ <input style="width: 100px;" type="text"/>
Private assets used for business costing less than \$18,000 (a one-off adjustment)	\$ <input style="width: 100px;" type="text"/>
Change of accounting basis	\$ <input style="width: 100px;" type="text"/>
Credits at 12.5% GST rate (such as: late claims, debit and credit notes, finance lease payments)	\$ <input style="width: 100px;" type="text"/>
Other (such as: bad debts written off, GST content shown on Customs' invoices)	\$ <input style="width: 100px;" type="text"/>
<b>Total credit adjustments. Copy this total to Box 13 on your return.</b>	<b>13</b> \$ <input style="width: 100px;" type="text"/>

## Filing your GST return

### Key points

- We post preprinted GST returns to you during the final week of your taxable period. If you haven't received a GST return in time you can download one from [www.ird.govt.nz](http://www.ird.govt.nz) (keywords: GST101A, GST103).
- You're personally responsible for the accuracy of the information on your GST return.
- You can file your GST return online at [www.ird.govt.nz/gst](http://www.ird.govt.nz/gst) "Get it done online".
- If you're having difficulty completing your GST return you should contact your tax agent/accountant or call us on 0800 377 776.
- You can make your payments to us through internet banking, in person at any Westpac branch, by credit or debit card on our website or by cheque.
- Nil returns still need to be filed by the due date.

You're personally responsible for the accuracy of the information on your GST return. If you're using a blank form, you'll need to add your personal details.

So make sure all the details on your GST return are correct, including your name and address.

- **Online filing**—go to [www.ird.govt.nz/gst](http://www.ird.govt.nz/gst) "Get it done online" and complete the return online. You'll need the **document lodgement number** (DLN) from the GST return we sent you. Print and sign a hard copy of your return and file it with your business records.
- **Manual filing**—complete the GST return you received and send it back to us in the envelope provided.

Pay your GST by internet banking, credit/debit card, by cheque or in person at any Westpac branch.

### Payment arrangements

There are penalties for paying late, so if you can't make your GST payment in one period, you may have some options. Don't wait until after the due date to contact us. You may be entitled to greater penalty reductions if you contact us before the due date.

To see what your options are go to [www.ird.govt.nz](http://www.ird.govt.nz) (keywords: managing difficulty) or call us on 0800 377 774.

### Questions about filing

#### If I have a nil GST return do I still have to file?

Yes—there are no exceptions. You must always file your GST return by the due date.

#### If I can't pay my GST amount what should I do?

File your GST return, then call us on 0800 377 774 to discuss your payment options.

#### What are the most common items businesses can claim GST on?

- power – electricity, gas
- telecommunications – telephone, fax, internet service
- motor vehicle expenses – petrol, repairs, warrant of fitness, registration
- stationery, office supplies
- repairs to business assets
- consumables, packaging
- capital, fixed assets – cars, trucks, equipment
- rent of business premises.

#### What are the most common items businesses can't claim GST on?

- salary and wages
- interest on a loan
- bank fees
- drawings taken from the till or stock taken from the shelf for personal use.

#### What are some common mistakes?

- poor record keeping
- calculation errors
- not filing nil returns
- incorrect adjustments
- incorrect claiming of personal adjustments
- not informing us if your business ceases.

## If you don't file your return, or file it late

### Key points

- Late returns may get a late filing penalty.
- You may have to pay a default assessment if you don't file your return.

### Late filing penalties

If you don't file your return by the due date you may have to pay a late filing penalty. These are:

- \$50 for each return filed on the payments basis
- \$250 for each return filed on the invoice or hybrid basis.

We'll send you a statement advising you of the **late filing penalty** and the due date for paying it. **Late payment penalties** and interest are charged on late filing penalties not paid by the due date. See page 21.

## Default assessments

If you don't send us a return, we estimate the amount of tax we think you should pay—a default assessment. In most cases, this amount will be higher than what you actually owe.

You still have to file the overdue return, even if you pay the default assessment.

When we get your completed return, we'll calculate the actual amount you need to pay, plus any penalties and interest.

- ▶ If you make a combined payment for GST and provisional tax but don't file your return, we'll use it to pay any GST default assessment and late filing penalty first.

## If you don't make your payment, or pay late

### Key point

- Late payments will be charged late payment penalties and interest.

### Interest

Interest applies if you don't pay the amount due or underpay. We'll charge interest on the amount outstanding from the day after the original due date.

Check the current interest rate at [www.ird.govt.nz](http://www.ird.govt.nz) (keywords: interest credit).

Interest is charged on the assessment and any penalties charged.

### Late payment penalties

We'll also charge you a late payment penalty if you don't make your payment by the due date. If you have a good payment history with us we may contact you before charging the penalty.

Otherwise, we'll charge an initial 1% late payment penalty on the day after the due date. We'll charge a further 4% penalty if there's still an amount of unpaid tax (including penalties) seven days after the due date.

Every month the amount owing remains unpaid after the due date we'll charge a further 1% incremental penalty.

- ▶ Interest and late payment penalties aren't charged on outstanding amounts of \$100 or less.

## Correcting an error in your GST return

If you realise you've made a minor error or errors in a GST return you've filed, which was caused by a clear mistake, simple oversight or mistaken undertaking that results in an under or overstatement of your tax liability, you can correct it in:

- the next taxable period and calculate the adjustment, or
- the same taxable period by writing to us with the details.

But, if you've chosen a particular tax position and then change your mind about it, you can't correct it. Instead, you must use our disputes process, which means completing a *Notice of proposed adjustment (IR 770)* and sending it to us no later than four months after the due date of the GST return it relates to.

For more information on disputing an assessment, see our factsheet *If you disagree with an assessment (IR 778)*.

### Making the correction in the next taxable period

The error or errors can be corrected in the next taxable period, when:

- a person has provided the return which contains one or more minor errors in the assessment of their liability for GST
- the error was caused by a clear mistake, simple oversight, or mistaken understanding on the person's part, and
- the total discrepancy in the assessment that is caused by the error is \$500 or less.

So, if you haven't claimed an expense for GST in one taxable period you can claim it in a following taxable period, provided you meet the above criteria.

### Record keeping

You must record these details in your GST paperwork and make the information available to us if we ask for it:

- What GST return period the error occurred in.
- The GST amount involved.
- The type of error.
- Which GST return period you made the correction in.

### Making the correction in the same taxable period

In some instances, you may be able to request us to amend an assessment to correct the error. Send us the following details:

- The GST taxable period the error occurred in.
- The GST amount involved and what the amended figures should be.
- The type of error and why the change is needed.

We'll then amend your original GST assessment and send you a statement of account.

Or you can include a GST input tax deduction not claimed in an earlier return period in a later return period. In most cases, claim the GST within two years of being entitled to claim it.

▶ Please do not send us an amended GST return.

### Interest

If the reassessed GST is an amount to pay and it's over \$100 we'll charge you use-of-money interest.

But, if the amount of reassessed GST is a refund over \$100, we'll pay you use-of-money interest.

### Penalties

We may ask for more information to decide whether we'll charge a shortfall penalty.

# Part 3 – Cancelling your GST registration

### Key points

- There are 3 reasons for cancelling your GST registration.
- You'll need to file a final GST return when you deregister.
- Your provisional tax due dates will change if you filed GST six-monthly or calculated your provisional tax using the ratio method.

You can cancel your GST registration if:

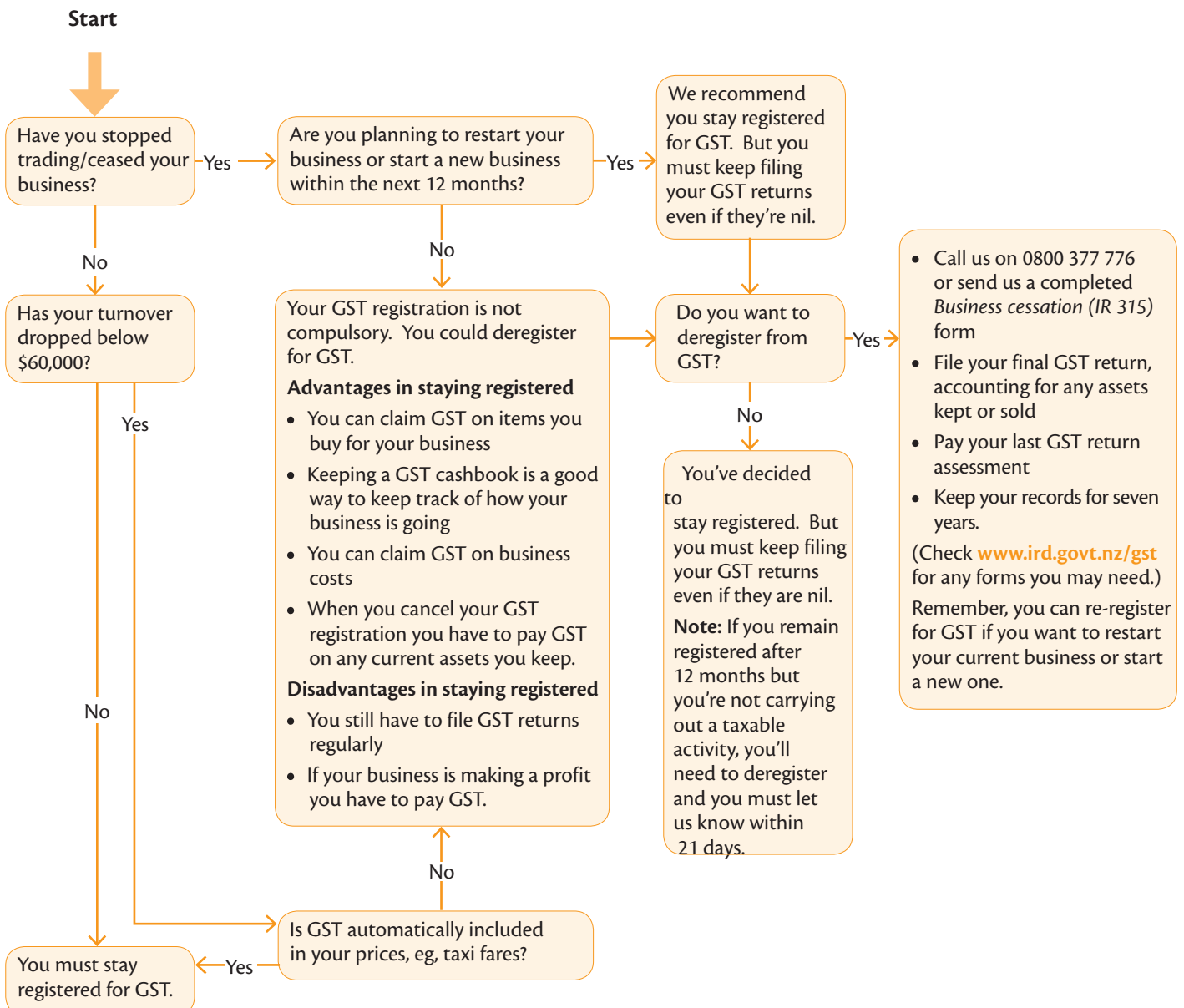
- you're closing down or selling your business
- you expect your turnover to drop below \$60,000—and stay there for a while
- you realise you aren't required to be registered.

When you cancel you'll no longer:

- have to charge GST on prices to customers
- be able to issue receipts and invoices showing your GST number
- have to file a GST return
- be able to claim GST back from us.

But, before you get the deregistration process under way, check the flowchart below. You may only have to suspend your GST activities.

## Should I deregister from GST?



### What you need to do

If you decide to deregister, you must let us know within 21 days of the date you close down or sell your business.

You can do this by completing a *Business cessation (IR 315)* form and posting it to us or by calling us on 0800 377 776.

You'll also need to send in a final return, up to your date of cancellation. This may not be the end of your normal taxable period.

Remember to account for GST on any business assets you keep. Make a note of these assets and their values on the IR 315.

### What we'll do

We'll send you notice of your actual cancellation date, which will normally be the last day of a taxable period. This may not be the end of your normal taxable period.

#### *Example*

Martin's next GST return is for the period 1 June to 31 July 2011.

On 5 June 2011 Martin tells us he's sold his business. We tell Martin his cancellation date is 30 June 2011.

Martin completes a final return for the period 1 June to 30 June 2011 which is due on 28 July 2011.

- ▶ If you're liable to pay provisional tax the due dates will change if you were registered on a six-monthly basis or you use the GST ratio method to calculate your provisional tax. For more information see our *Provisional tax guide (IR 289)*.



## Part 4 – Adjustments

The rules for making adjustments for capital or asset items changed from 1 April 2011.

For assets bought before 1 April 2011 you can choose to use the old rules or new rules. Go to [www.ird.govt.nz/gst](http://www.ird.govt.nz/gst) for the old rules.

You can find out more on the new adjustment rules in the *Tax Information Bulletin* Vol 23, No 1 (February 2011) at [www.ird.govt.nz](http://www.ird.govt.nz)

### Adjustments for capital or asset items from 1 April 2011

From 1 April 2011 new rules replace the current adjustment approach. You'll be required to apportion your input tax deductions in line with the actual use of your goods and services. The new rules operate as follows:

- The amount of input tax deduction you can claim must correspond with the portion of the asset's use that is intended for taxable purposes.
- In subsequent years, you may be required to adjust the deduction claimed if the actual use for taxable purposes is different from the intended taxable use of the asset.
- There is a maximum number of adjustment periods required based on the value of your goods or services, excluding GST. These are as follows:
  - \$5,001 to \$10,000 – two adjustments
  - \$10,001 to \$500,000 – five adjustments
  - \$500,001 or more – ten adjustments.

You may also select the maximum number of adjustments based on the estimated useful life of the asset.

- There is no limit to adjustment periods in relation to land.
- Special "wash-up" rules apply when goods and services that have been subject to the apportionment rules are sold or the person deregisters.
- Special rules apply to the concurrent use of land for taxable and non-taxable purposes.

The new rules must be used for assets acquired after 1 April 2011.

For help calculating your adjustments for assets acquired from 1 April 2011 use our online calculator at [www.ird.govt.nz](http://www.ird.govt.nz) "Work it out"

#### Adjustments on purchases and expenses

You can claim a deduction of the purchase of goods and services to the extent to which those goods and services are used for making taxable supplies.

You must estimate on acquisition how you intend to use the goods or services and choose a determination method that provides a fair and reasonable result, which will be expressed as a percentage of the total use. The estimate could be made on the basis of any available records, previous experience, business plans or other suitable methods. The method of working out the

extent of intended taxable use will largely depend on the nature of the goods and services in question. For example, if the asset is a car which is intended to replace an existing car used in the business, the logbook for the previous car could be a reasonable method of stipulating the intended use of the purchased car provided patterns of use are largely unchanged.

#### Example

John buys a car for \$23,000 (including GST of \$3,000) to replace his existing car. The car will be used both in John's business as a sole trader and for private purposes.

The logbook kept by John for his old car shows that in the previous year he used the car 70% of the time for business purposes. Since John does not expect this ratio to substantially change in the future, he estimates that he will use the new car 70% for taxable purposes. Consequently, on acquisition John claims 70% of the available input tax:

$$\$3,000 \times 70\% = \$2,100$$

The new rules aim to achieve as much "first instance" accuracy as possible by requiring taxpayers to make fair and reasonable estimates on the intended taxable and non-taxable uses of acquired goods and services. In an "adjustment period" following the initial input tax deduction claim, you may, however, be required to make further adjustments if the actual taxable use of an asset is different from its intended taxable use.

#### Exclusions (where no adjustments are required) de minimis provision

In a similar way to the current rules, recipients will not be required to apportion input tax if they make both taxable and exempt supplies and have reasonable grounds to believe the total value of their exempt supplies in the first adjustment period will be no more than the lesser of \$90,000 or 5% of the total consideration for all taxable and exempt supplies. This is known as the de minimis provision which relieves you from the obligation to apportion input tax in certain circumstances.

#### Example

A corner dairy spends \$6,000 (exclusive of GST) on renovations. The major part of the dairy's business involves making taxable supplies. However, the dairy also runs a debtors' account and charges interest on any late payments (exempt supplies). Since the total value of the interest charged (exempt supplies) in the first adjustment period is expected to be no more than the lesser of \$90,000 or 5% of the total consideration for all taxable and exempt supplies made, the dairy isn't required to apportion the input tax in relation to the renovations.

#### Value of supply

No subsequent change-in-use adjustment will be required for goods and services acquired for the GST-exclusive value of \$5,000 or less.

**Example**

Sherry, a graphic designer, buys a computer for \$3,999 (including GST of \$522) to use both for business and private purposes. She estimates she will use the computer 80% for taxable purposes and claims a deduction of \$418 (80% of \$522).

Since the GST-exclusive value of the computer is less than \$5,000, Sherry will not be required to make any adjustments for change in use in any of the subsequent adjustment periods.

**Less than 10%**

If the percentage of actual use of goods or services differs from the percentage of intended use or previous actual use, you will be required to make an adjustment in an adjustment period only if the difference between the amounts is 10 percentage points or more, or the value of the adjustment is more than \$1,000.

**Example**

Tim buys a new car for \$25,000. Tim calculates the GST content (the amount of input tax) as \$3,260.87. He calculates this as follows:

$$\$25,000 \times 3 \div 23 = \$3,260.87$$

Tim predicts he will use the car 60% for taxable purposes and claimed 60% of the input tax. He calculates this as follows:

$$\$3,260.87 \times 60\% = \$1,956.52$$

**First adjustment – after one year**

After a year, Tim reviews his business records and notes that he actually used the car in his business 64% of the time. When the percentage of actual use is compared with the estimated use it shows a 4% difference (64% – 60% = 4%).

$$\$3,260.87 \times 4\% = \$130.43$$

As the 10% threshold has not been exceeded and the monetary value is less than \$1,000, Tim is not required to make an adjustment in this taxable period.

If Tim had purchased a more expensive car such as a Mercedes valued at \$200,000 the calculation would be:

$$\begin{aligned} \$200,000 \times 3 \div 23 &= \$26,086.96 \text{ (GST content)} \\ \$26,086.96 \times 60\% &= \$15,652.18 \text{ (percentage of business use)} \\ \$26,086.96 \times 4\% &= \$1,043.48 \text{ (percentage difference)} \end{aligned}$$

The 10% threshold has not been exceeded. However, the monetary value is more than \$1,000 so Tim is required to make an adjustment in this taxable period of \$1,043.48.

**Adjustment period**

An “adjustment period” is normally 12 months, ending on your balance date. The most common balance date is 1 April to 31 March.

The first adjustment period is a period that starts on the date of acquisition and ends on either:

- the first balance date that falls after the date of acquisition or
- the first balance date that falls after at least 12 months after the date of acquisition.

All subsequent adjustment periods will be done annually, ie, 12 months ending on your balance date.

**Example**

Mary buys a car on 1 February 2012. Her balance date is 31 March.

Mary can choose when her first adjustment period ends. The options are:

- from 1 February 2012 to 31 March 2012, or
- from 1 February 2012 to 31 March 2013.

If Mary has chosen the first option as her first adjustment period, the second adjustment period will run from 1 April 2012 to 31 March 2013.

If Mary has chosen the second option as her first adjustment period, the second adjustment period will run from 1 April 2013 to 31 March 2014.

As mentioned earlier there are a maximum number of adjustment periods depending on the value of goods or services. However, there is **no limit to adjustment periods in relation to land**.

You must compare the percentage actual use of goods or services with:

- the percentage intended use of the goods or services (if no previous adjustment has been made), or
- the previous actual use (if the goods or services have been subject to a previous adjustment).

**Example**

Identifying percentage actual use and percentage intended/previous actual use.

Peter acquires a luxury boat for \$500,000 plus GST. When he bought it, Peter estimated the boat would be used 100% for chartering—a taxable purpose—and claimed the full input tax deduction. However, in later periods Peter uses the boat partly for private purposes.

Based on the value of the boat, Peter determines there will be five adjustment periods. In those adjustment periods, Peter uses the boat as follows:

- in the first adjustment period – 100% for taxable purposes
- in the second adjustment period – 80% for taxable purposes
- in the third adjustment period – 83% for taxable purposes
- in the fourth adjustment period – 50% for taxable purposes, and
- in the fifth adjustment period – 90% for taxable purposes.

The first adjustment period is a period of six months. All subsequent adjustment periods are periods of 12 months. None of the exclusions apply to this situation.

The question is: what are the use percentages Peter has to compare at the end of each adjustment period?

#### **First adjustment period**

Percentage intended use – 100%

Percentage actual use – 100%

#### **Second adjustment period**

Previous actual use – 100%

In this adjustment period it was used 80% since acquisition.

$$(100\% \times 6 \div 18) + (80\% \times 12 \div 18) = 33.3 + 53.33 = 86.6\%$$

Percentage actual use – 86.6%

In the above calculations, figures “6” and “12” represent, respectively, the length of the first and second adjustment periods expressed in months. The figure “18” represents the total number of months since the acquisition of the boat.

#### **Third adjustment period**

Previous actual use – 86.6%

In this adjustment period it was used 83% since acquisition.

$$(100\% \times 6 \div 30) + (80\% \times 12 \div 30) + (83\% \times 12 \div 30) = 20\% + 32\% + 33.2\% = 85.2\%$$

Percentage actual use – 85.2%

#### **Fourth adjustment period**

Previous actual use – 85.2%

In this adjustment period it was used 50% since acquisition.

$$(100\% \times 6 \div 42) + (80\% \times 12 \div 42) + (83\% \times 12 \div 42) + (50\% \times 12 \div 42) = 14.3\% + 22.9\% + 23.7\% + 14.3\% = 75.2\%$$

Percentage actual use – 75.2%

#### **Fifth adjustment period**

Previous actual use – 75.2%

In this adjustment period it was used 90% since acquisition.

$$(100\% \times 6 \div 54) + (80\% \times 12 \div 54) + (83\% \times 12 \div 54) + (50\% \times 12 \div 54) + (90\% \times 12 \div 54) = 11.1\% + 17.8\% + 18.4\% + 11.1\% + 20\% = 78.4\%$$

Percentage actual use – 78.4%

Peter will be required to account for adjustments to us in the second, third, fourth and fifth adjustment periods because in each of those periods either the percentage difference is more than 10 percentage points or the monetary value of the adjustments is more than \$1,000.

The following example pulls everything together and shows typical adjustments over four adjustment periods with the asset being sold in the final adjustment period. This example details the adjustments that are required on disposal of goods and services.

#### **Example**

John, a sole trader bought a vehicle for \$20,000 plus \$3,000 GST. On acquisition, John claimed 70% of the input tax—\$2,100. Since the GST-exclusive value of the car falls between \$10,001 and \$500,000, he has to monitor the use of the car for five adjustment periods.

In the first adjustment period (12 months), John’s logbook entries show he used the car 55% for business (taxable use).

In the second adjustment period (12 months), John used the car 65% for business.

In the third adjustment period (12 months), John withdrew the car from use in the business and used it solely for private purposes.

In the fourth adjustment period, John sold the car for \$10,000 inclusive of GST.

#### **First adjustment period**

At the end of the first adjustment period, John has to determine whether he may rely on the exclusions (minimal exempt supplies) or (the value of the supply) to avoid any change-in-use adjustments. John determines that the exclusion does not apply.

John has to determine whether the use of the car in the first adjustment period corresponds to the intended taxable use of the car as estimated when he bought it. To do this he must compare the percentage actual use of the car with the percentage intended use of the car.

The car logbook John kept showed the taxable use of the car accounted for 55% of its total use. On acquisition, John predicted he would use the car 70% for taxable purposes. Since the difference between the intended taxable use and the actual taxable use is more than 10%, John may not rely on the exclusion and has to make an adjustment for change in use.

John calculates the amount of the deduction he has to return to us as output tax:  $\$3,000 \times 15\% = \$450$ .

#### **Second adjustment period**

For the second adjustment period, the percentage actual use must be calculated from the date of acquisition to the end of the relevant adjustment period. John used the car for taxable purposes 55% in the first adjustment period of 12 months and 65% in the second adjustment period of 12 months. Overall, over two years, John used the car 60% for taxable purposes calculated as follows:

$$(55\% \times 12 \div 24) + (65\% \times 12 \div 24) = 60\%$$

John needs to compare the percentage actual use with “previous actual use” where an adjustment has been made. For John, the previous actual use will be 55%, as this was the actual use of the car at the end of the first adjustment period. Since the difference between the percentage actual use (60%) and the previous actual use (55%) of the car is less than 10 percentage points, John will not be required to account for the amount of the adjustment if the value of the adjustment is less than \$1,000. John calculates the value of the adjustment is less than \$1,000 as follows:

$$\$3,000 \times 5\% = \$150 \text{ (no adjustment is required).}$$

**Third adjustment period**

John calculates the percentage actual use of the car after three adjustment periods as follows:

On acquisition John estimated the use of the car as 70%.	$(55\% \times 12 \div 36) = 18.3\%$
In the first adjustment period the car was used 55% for taxable purposes.	
The adjustment period was 12 months.	
The total number of months since acquisition was 36.	
In the second adjustment period the car was used 65% for taxable purposes.	$(65\% \times 12 \div 36) = 21.7\%$
In the third adjustment period the car was used privately with zero business use	$(0\% \times 12 \div 36) = 0\%$
The percentage actual use since acquisition is 40%.	$18.3\% + 21.7\% + 0\% = 40\%$

This percentage has to be compared with the previous actual use. Since John did not make an adjustment in the previous (second) adjustment period, the “previous actual use” will be the percentage actual use in a period that is the most recent period in which an adjustment has been made. John made an adjustment in the first adjustment period when his percentage actual use was 55%. This percentage will become John’s previous actual use for the purposes of the adjustment in the third adjustment period. Since the difference between the percentage actual use (40%) and the previous actual use (55%) of the car is more than 10 percentage points, John has to account to us for the over-claimed amount of the deduction. The amount of the output tax to be accounted for is:  $\$3,000 \times 15\% = \$450$ .

**Adjustment on disposal**

When you dispose of goods or services in the course of a taxable activity and you have not claimed a full input tax deduction you may claim an additional deduction. You’ll need to know the:

- “Tax fraction”. For the purposes of the 15% GST rate, the tax fraction is  $3 \div 23$ .
- “Consideration” is the amount received, or treated as received, for the supply.
- “Actual deduction” is the amount of deduction already claimed, taking into account adjustments made up to the date of disposal.

The amount of deduction available on disposal of goods or services will be calculated under the formula:

$$\text{tax fraction} \times \text{consideration} \times (1 - \text{actual deduction/full input tax deduction})$$

**Example**

John, the sole trader in previous examples, has now sold his car.

**Fourth adjustment period**

In the fourth adjustment period, John sold the car in the course of his taxable activity for \$10,000. Because John has not claimed the full deduction ifor the car, he may claim an additional amount of the adjustment on its disposal calculated as follows:

$$3 \div 23 \times \$10,000 \times (1 - \$1,200 \div \$3,000) = \$783$$

The calculation is broken down as follows:

1. John calculates the GST on the amount received for the car ( $\$10,000 \times 3 \div 23 = \$1,304.34$ ).
2. John then calculates the actual amount claimed ( $\$2,100$  less  $\$450$  less  $\$450 = \$1,200$ ).
3. The original GST on acquisition was \$3,000. John has already claimed 40% of the original GST.
4. John then divides the amount claimed by the full amount of input tax that could be claimed ( $\$1,200 \div \$3,000 = 40\%$ ).
5. The amount of \$10,000 (100% of the sale) will need to be returned as income. John can claim a “wash-up” of the percentage difference, ie, 60% calculated on the GST received on the sale price of the car ( $60\% \times 1,304.34 = \$783$ ).
6. John may claim a deduction of \$783 for the taxable disposal of the car.

The amount calculated under the formula, when added to any deduction already claimed, must not be more than the total amount of the input tax on the supply (or the nominal GST component, if the supply was zero-rated).

**Example: Appreciating asset**

Sandy, a property developer, built two similar residential houses, house A and house B, next to each other.

The total input tax on the construction costs that relate to house A is \$30,000. Sandy claimed 64.8% of the total input tax—\$19,440.

At the beginning of the third adjustment period, Sandy sold the house to Nigel for \$320,000 inclusive of GST. Since Sandy has not claimed the full input tax for the construction cost incurred for the property, she may make a final adjustment of the input tax:

$$3 \div 23 \times \$320,000 \times (1 - \$19,440 \div \$30,000) = \$14,692$$

The resulting amount of \$14,692, when added to the deduction already claimed (\$19,440), is more than the total amount of the input tax on the supply (\$30,000). So the amount of the adjustment that may be claimed by Sandy will be limited to \$10,560.

**Example: Depreciating asset**

Charles bought a car for \$46,000 (inclusive of GST of \$6,000) and claimed 70% of the input tax (\$4,200). Having used the car for the intended purpose for three years, Charles sells it for \$30,000 inclusive of GST. Since Charles has not claimed the full input tax for the car and the car was sold in the course of the taxable activity, he may make a final adjustment of the input tax:

$$3 \div 23 \times \$30,000 \times (1 - \$4,200 \div \$6,000) = \$1,174$$

The amount of the adjustment to be claimed for the taxable disposal of the vehicle is \$1,174.

**Special rule for concurrent use of land**

Under the new apportionment approach, the portion of a deduction a person should be entitled to claim must correspond with the extent to which the asset is used for taxable purposes. In most situations, an asset may only be used for either taxable or non-taxable purposes at one particular time. For example, at any given time a motor vehicle may be used by a person for making deliveries of goods and services or for taking the person's children to school—but usually not both at the same time.

In some circumstances, however, an asset may be used for taxable and non-taxable purposes at the same time, eg, a property developer may supply a house as a dwelling for a few months while advertising the house for sale. For the duration of the rental period, the asset is not only fully committed to the taxable activity (the sale), but is also simultaneously fully committed to the exempt activity (residential rental income).

The following formula will help you in apportioning between concurrent uses of land:

$$\frac{\text{consideration for taxable supply}}{\text{total consideration for supply}} \times 100\% = (\text{percentage of taxable use})$$

The “consideration for taxable supply” is either the amount derived on disposal of the land or, if the land has not been disposed of, the market value of the land at the time of the adjustment.

The “total consideration for supply” is the sum of the amount of the “consideration for taxable supply” described above, and:

- the amount of all rental income derived from the supply of a dwelling since the land was acquired, and
- if no rental income is paid or payable in relation to the non-taxable use of land, the market value of rental income that would have been derived from the time of acquisition of the land if rental had been charged.

You may apply for an alternative approach if this formula doesn't fit your circumstances.

The market value must be used in determining consideration for taxable supply and/or total consideration for supply if amounts derived under those definitions are by associated persons or are not arm's-length amounts.

If the market value of the land or rental income is not readily identifiable, the person may use another method to provide a fair and reasonable estimate of the market value.

**Example**

Sandy, a property developer, built two similar residential houses, house A and house B, next to each other. The construction cost of each house is \$230,000 (including GST of \$30,000). Sandy intends to sell both properties on completion (a taxable use) and claims a full deduction on the GST incurred on construction. Sandy is unable to sell the properties immediately on completion.

So, while still advertising the houses for sale, she:

- rents out house A and receives rental income of \$26,000 in the first adjustment period, and
- moves into house B and lives there rent free.

At the end of the first adjustment period, Sandy sells house B for \$360,000.

**House A – Adjustment at the end of the first adjustment period**

Since Sandy used the house concurrently for taxable purposes (advertising for sale) and exempt purposes (supplying a residential dwelling), she needs to identify the actual taxable use of the property in the first adjustment period.

The consideration for taxable supply is either the amount derived on disposal of the land or, if the land has not been disposed of, the market value of the land at the time of the adjustment. Sandy has not disposed of house A, but ascertains the market value of the house is approximately the same as for house B (\$360,000).

The total consideration for supply is the amount of the consideration for taxable supply (\$360,000) and the amount of all rental income (\$26,000) derived from the supply of the dwelling since the land was acquired (\$386,000).

Sandy's taxable use of the house is:

$$\frac{\$360,000}{\$386,000} \times 100\% = 93\%$$

As Sandy had originally claimed 100% on acquisition she has therefore claimed 7% more input tax than she should have and has to account for this to us:

$$\$30,000 \times 7\% = \$2,100$$

#### **House B – Adjustment at the end of the first adjustment period**

Because Sandy used the house concurrently for taxable purposes (advertising for sale) and private purposes (residential), she has to identify the actual taxable use of the property in the first adjustment period. The consideration for taxable supply is the amount derived on a disposal of the house (\$360,000).

Because Sandy did not rent out house B, but still used it for non-taxable purposes, the total consideration for supply is the amount of the consideration for taxable supply (\$360,000) and the market value of the rental income she would have derived if she had rented out the property.

Sandy estimates she would have received \$26,000 of rental income. Her taxable use of the house is:

$$\frac{\$360,000}{\$386,000} \times 100\% = 93\%$$

Sandy has deducted 7% more input tax than she should have and has to account for this amount to us:

$$\$30,000 \times 7\% = \$2,100$$

In both cases, Sandy may be able to recover some or all of the unclaimed input tax if she later disposes of the houses in the course of her taxable activity.

An additional formula estimates the extent of taxable use of the land if the land has, at any time, been used solely for making non-taxable supplies.

The formula is:

$$\frac{\text{months}}{\text{total months}} \times \text{result}^*$$

"Months" is defined as the number of months since acquisition in which all or part of the land is used to some extent for making taxable supplies.

"Total months" is defined as the total number of months since acquisition.

"Result" from calculation to establish the percentage of taxable use.

#### **Example**

The facts are the same as in the previous example and the length of the first adjustment period was 12 months. In the second adjustment period, Sandy continues both letting out house A and advertising it for sale. However, six months after the start of the second adjustment period, Sandy stops advertising house A for sale because she decides to permanently rent it out.

In the second adjustment period, she receives rental income of \$30,000. The market value of house A at the time of the adjustment is still \$360,000. At the end of the second adjustment period, Sandy identifies the taxable use of the house.

For the purposes of the second adjustment period, the total consideration for supply is the sum of the market value of the house and all rental income received since the land was acquired ( $360,000 + 26,000 + 30,000 = \$416,000$ ).

$$\frac{\$360,000}{\$416,000} \times 100\% = 86.5\%$$

However, because the house has been used for six months solely for making non-taxable supplies, she has to calculate the percentage actual use:

$$\frac{18}{24} \times 86.5\% = 64.8\%$$

Sandy's percentage actual use of house A in the second adjustment period is 64.8%. The percentage actual use must be compared with the "previous actual use", ie, with the percentage actual use as determined in the most recent period in which an adjustment has been made. For Sandy, the previous actual use will be 93%. So Sandy has deducted 28.2% ( $93\% - 64.8\% = 28.2\%$ ) more input tax than she should have and has to account for this to us:

$$\$30,000 \times 28.2\% = \$8,460$$

## Other adjustments

### Barters

You can also exchange goods and services for other goods or services, or a combination of goods, services and money—this is barter.

If the exchange is for other goods and services, you must account for  $\frac{3}{23}$  of the open (current) market value of whatever you received in return for your supply.

When part of the exchange is money, you must include:

- $\frac{3}{23}$  of the open (current) market value of the goods and services you received, as an adjustment in Box 9 of your GST return, and
- the money received in Box 5 of your GST return.

Use this rule whichever accounting basis you're on.

You might also receive goods and services in full (or part-exchange) for your supplies from another person. Between you, work out a dollar value for the exchange, eg, a trade-in. You must include this agreed value, plus any money involved, in Box 5 of your GST return.

### Bad debts recovered

If you've had a GST deduction for a bad debt written off and you later recover all or part of the debt, you must make an adjustment for the amount recovered.

Include  $\frac{3}{23}$  of the amount recovered in Box 9 of your GST return.

#### Example

Manu, who uses the invoice basis, wrote off a bad debt of \$2,500 and later recovered \$1,600. He must make an adjustment of \$208.70 ( $\$1,600 \times \frac{3}{23}$ ) at the time of recovery, even if he's changed his accounting basis since then.

### Insurance payments received

If you receive an insurance payment relating to your taxable activity, include the GST content as an adjustment in the GST return that covers the time you received the payment. For example, an insurance company issues a cheque to cover equipment damaged in a fire.

### GST shown on New Zealand Customs invoices

The New Zealand Customs Service (Customs) collects GST when goods:

- are imported into New Zealand. Customs charges GST on the landed value (including insurance and duties) for the goods.
- manufactured in New Zealand are removed from a licensed manufacturing area by a purchaser at "in bond" prices (eg, liquor and tobacco). Customs charge GST on the excise duty.

Documents issued by Customs (such as a *Customs import entry form C4*, a *Deferred payment of duty statement* or *Broker account statement*) don't have to meet all the tax invoice requirements. These documents can be used to support a claim for a GST credit. Remember, you must hold these supporting documents to make a claim.

- ▶ Don't include imported goods under Box 11 on your GST return.

### When to account for GST paid to Customs

The table below explains when to account for GST paid to Customs, depending on your accounting basis.

For more information about GST on imported goods go to the New Zealand Customs Service [www.customs.govt.nz](http://www.customs.govt.nz) (keyword: importers) or call 0800 428 786.

If you use the...	you...
invoice basis	claim the GST content shown on the Customs document in Box 13 of the GST return for the period you receive the invoice or make a payment, whichever is earlier.
payments or hybrid basis	claim the GST content shown on the Customs document in Box 13 of the GST return for the period you make the GST payment.

### Home office expense

It's common for businesses to use an area set aside in the family home for work. If you do this you could claim GST on part of the running costs of your home. You must:

- set aside an area principally for business use, and
- keep full records of all expenses you want to claim.

Calculate your GST adjustment by working out the percentage of the area you use for work against the total area of your home. You can claim the adjustment either annually or on a period-by-period basis.

### FBT (fringe benefit tax)

Companies and employers registered for FBT don't need to make a private use adjustment. But, they will need to make a GST adjustment for any fringe benefits liable for GST.

Sole traders, partnerships and trusts registered for FBT may still have to make a private use adjustment if the owner, partners, trust members or associated persons use business assets privately. They also need to make a GST adjustment for any fringe benefits liable for GST.

Make the adjustment in the FBT return period you provide the benefits in.

Step	What to do
1	Take the total taxable value of all fringe benefits from your FBT return. (This is the amount of the benefits, not the FBT itself.)
2	Subtract the value of any benefits which are exempt or zero-rated supplies for GST. The most common ones are: <ul style="list-style-type: none"> <li>● low-interest loans</li> <li>● other financial services</li> <li>● international travel</li> <li>● contributions to employee superannuation and life insurance policies.</li> </ul> The result is the fringe benefits liable for GST.
3	Multiply the result from step 2 by 3 then divide by 23. This is the GST adjustment to include in your FBT return. Include this adjustment in: <ul style="list-style-type: none"> <li>● Box 7 of the quarterly FBT return (IR 420) for quarterly filers</li> <li>● Box 6 of the annual FBT return (IR 422) for annual filers</li> <li>● Box 6 of the income year FBT return (IR 421) for income year filers.</li> </ul>

**Example: Taxable benefits for FBT quarter ended 31 March 2011**

Motor vehicles	\$2,605
Low-interest loans	\$ 425
Magazine and newspaper subscriptions	\$ 52
Subsidy on employee's honeymoon trip to Fiji	\$ 600
<b>Total</b>	<b>\$3,682</b>
Benefits liable for GST are:	
Motor vehicles	\$2,605
Magazine and newspaper subscriptions	\$ 52
<b>Total</b>	<b>\$2,657</b>

The low-interest loan and subsidy for the Fiji honeymoon aren't included because loans are exempt supplies and international travel is a zero-rated supply.

The amount of the GST adjustment is \$346.57 (\$2,657 x 3 ÷ 23). Enter this in Box 7 for the FBT return for the quarter ended 31 March 2011. Pay the adjustment when your FBT for the March quarter is due.

If an employee makes a payment direct to the employer towards a fringe benefit, this is a separate supply and is liable for GST. Include this payment as income in Box 5 of the GST return. The time of supply is the same as for any other sale by the business.

**Example**

An employee has paid \$100 cash direct to the employer. Add the \$100 to the sales in Box 5 of the GST return. The GST to pay on the \$100 is \$13.04.

**Calculating GST on fringe benefits for the 2010–11 year**

On 1 October 2010 the rate of GST changed from 12.5% to 15%.

If you file quarterly FBT returns you calculate the GST on fringe benefits at the current rate of 15% from the quarter ending 31 December 2010.

If you file annual or income year FBT returns you need to calculate the GST on fringe benefits at the GST rate of 12.5% for benefits provided from the start of your 2011 FBT return period up to 30 September 2010. To calculate GST at 12.5% divide the fringe benefits liable for GST for that period by 9 instead of multiplying by 3 then dividing by 23.

Fringe benefits provided from 1 October 2010 until the end of your annual or income year FBT return period will have the GST calculated at 15%.

Add together the GST on fringe benefits you've calculated for both parts of the year and include the total GST adjustment in either Box 6 of the annual FBT return (IR 422) or income year FBT return (IR 421).



## Entertainment expenses

Business entertainment expenses are related to taxable income, and are incurred in the course of running a business. Usually, only 50% of business entertainment expenses are deductible for income tax. Read our *Entertainment expenses (IR 268)* guide for details. You'll need to make a GST adjustment of  $\frac{3}{23}$  of the non-deductible amount once a year.

You can't claim GST on private entertainment expenses, eg, a restaurant lunch with friends.

During the year, keep showing your total business entertainment expenses on your GST return. The table below explains exactly when to make the adjustment depending on whether a tax agent prepares your income tax return.

If you...	you make the adjustment in the GST return that covers...
don't have a tax agent	the date your income tax return is due or filed, whichever is the earlier date. <b>Example</b> If your 2011 income tax return is due on 7 July 2011 and you don't have a tax agent, you need to make your GST adjustment in the GST return which includes that date.
have a tax agent	the earlier of: <ul style="list-style-type: none"> <li>the date your income tax return is filed, or</li> <li>31 March after the due date for your income tax return.</li> </ul>
have a tax agent who has an extension of time to file your income tax return	the date your income tax return is actually filed.

- ▶ If an employee contributes to the expense, treat this as a separate supply for GST. Include the total expense amount in Box 11 on your GST return as usual and show the employee contribution in Box 5.

Because the GST adjustment is based on the amount which isn't deductible for income tax, organisations that aren't liable for income tax, eg, non-profit organisations and charities, don't need to make this adjustment.

### Calculating the adjustment for entertainment expenses

The table below explains how to calculate the adjustment for an entertainment expense using the example on the right.

#### Example

XYZ Ltd's only entertainment expense in the 2011 tax year was a business lunch for clients. The lunch cost \$230 including GST. The income tax return for the year ending 31 March 2011 is filed on 7 July 2011, and the company files six-monthly GST returns for the periods April and October.

XYZ makes the adjustment in the GST return for the six months ending 31 October 2011. The full \$230 would have been included in Box 11 of an earlier GST return to claim the GST credit.

Step	What to do	Example
1	To work out the GST, multiply the expense by 3 then divide by 23.	$\$230 \times 3 \div 23 = \$30$
2	Subtract GST from the entertainment expense.	$\$230 - \$30 = \$200$
3	Work out the amount that is not deductible for income tax (50%).	$\$200 \times 50\% = \$100$
4	Multiply the non-deductible amount by 3 then divide by 23. This is your GST adjustment. Show this GST adjustment on your <i>GST adjustments calculation sheet (IR 372)</i> under "Entertainment expenses". Transfer the total amount to Box 9 of your GST return for the period ending 31 October 2011.	$\$100 \times 3 \div 23 = \$13.04$

## Telephone expenses

### Cellphones

If you have a business cellphone, you can claim GST on the total set-up cost.

If you use the same cellphone for private use, you can claim GST on these running costs:

- total fixed cost of running the phone
- business calls.

### How to claim for telephone line rental

See the table below.

If you...	you...
have a commercial and domestic line rental	can claim the GST on the full cost of the commercial line. Include the commercial rental cost in Box 11 on your GST return. You can't claim any part of the domestic rental.
have only one telephone line rental and use it for business and private purposes	can claim GST on 50% of the cost. Show 50% of the rental in Box 11 on your GST return. The line can be commercial or domestic.
want to claim more than 50% of your rental	must show that the actual business use of your telephone is greater than 50%. The proportion of business toll calls to private toll calls may be one factor in working out the overall business use. You'll need to consider other factors, eg, your type of business and how many people live in the house.
are a farmer	may claim the full cost of telephone rental used for business and private purposes. Include the full rental in Box 11 on your GST return.
make business-related calls	may claim the full amount of GST on these calls.

## Bad debts written off

If you supply goods or services and put them through the books, but later write off all or part of the consideration as a bad debt, you can make a credit adjustment in the period you write it off. How you do this depends on your accounting basis—see the table below.

If you use the...	you...
invoice or hybrid basis	account for a sale when you issue an invoice. If you've already included the GST on the sale in a previous return, and then later write off the debt, you'll use this adjustment.
payments basis	won't account for the GST on a sale until you actually receive it. If you don't receive payment and write the debt off, you can't claim a deduction, because you haven't included the GST on the sale in any GST return. You may make an adjustment for door-to-door sales and hire purchase agreements if you use the payments basis—see page 39 and 40.

### Calculating a credit adjustment

Show  $\frac{3}{23}$  of the full amount you've written off on the calculation sheet and include it in Box 13 of your GST return. You don't need to send in any documents supporting the write-off, but you do need to keep a record of the steps you took to recover the debt. For example:

- a debtor's ledger showing the date you issued the invoice
  - letters from a solicitor/debt collector trying to recover the debt
  - a bad debts ledger showing the write-off.
- ▶ You must write off the debt(s). You can't claim for provision for bad debts.

#### Example

Brent, who uses the invoice basis, issues Chris with an invoice dated 26 October 2010 for electrical goods worth \$115 including GST. Brent accounts for the sale in the return for the period ending 31 October. In the following March, Brent gives up hope of receiving payment from Chris and writes off \$115 as a bad debt.

Brent shows  $\$115 \times 3 \div 23$  on his *GST adjustments calculation sheet (IR 375)* under "Bad debts written off" and includes it in Box 13 of his GST return for the taxable period ending 30 April 2011.

### GST not charged on the full price

If the bad debt was for goods or services where GST wasn't charged on the full price (eg, the fifth week of a hotel stay, or a hire purchase sale), the GST adjustment is not simply  $\frac{3}{23}$  of the bad debt.

Use this formula to calculate the adjustment:

$$\text{Bad debt written off divided by total consideration} \\ \times \text{GST included in consideration} = \text{GST adjustment.}$$

#### Example

Sue stayed at the Holiday Hotel for six weeks. Her total bill was \$6,005.57. Sue leaves, still owing \$1,000. After some time, the hotel writes off the \$1,000 as a bad debt. The amount of GST included in the total bill is \$602.57. The hotel must make an adjustment in its return which covers the period of the write-off:

$$\$1,000 \div \$6,005.57 \times \$602.57 = \$100.33$$

## Part 5 – Supplies

### Exempt supplies

Some goods and services are exempt from GST so you don't include them in your GST return. These include:

- penalty interest
- renting a dwelling for use as a private home
- residential accommodation under a head lease.

#### Penalty interest

Interest charged on overdue accounts is treated as an exempt supply.

##### *Example*

If you sell goods to another supplier on a 30, 60 or 90-day account basis, and that account becomes overdue, any penalty interest chargeable on the non-payment shouldn't be included in your GST return because it's exempt.

- ▶ You don't pay GST on fines and penalties you get for a statutory offence, eg, parking penalties or infringement fees issued by courts or local authorities.

#### Renting a residential dwelling

The rent for a residential dwelling is exempt from GST. A landlord can't claim GST on any expenses, such as maintenance, rates and insurance.

If a residential dwelling is sold as part of a taxable activity, and it was rented for at least five years beforehand, the sale is an exempt supply.

If a property developer acquires a property for the principal purpose of making a taxable supply and then subsequently rents that property out, a change of use adjustment may be required.

See our *Tax Information Bulletin (TIB)*, Vol 5, No 8 (January 1994) for more information.

#### Residential accommodation under a head lease

In most cases, if a property is leased as residential accommodation under a head lease, it's an exempt supply. But this rule doesn't apply if:

- the buyer and seller agree the exemption doesn't apply
- the supplier has, before 16 May 2000, treated the supply under the lease as being a taxable supply.

### Zero-rated supplies

Some supplies are zero-rated for GST and taxed at 0% because the supplies are normally provided to people living overseas.

#### Restraint of trade

Any payment you receive in return for not conducting a taxable activity outside New Zealand is zero-rated.

#### Internet sales

A registered New Zealand-owned entity that sells goods or services through the internet to customers in New Zealand will charge GST at the usual rate.

But, a New Zealand-owned entity that sells goods or services through the internet to overseas buyers will generally charge GST at 0%.

We expect sellers to take reasonable steps to check where the customer lives and where the goods or services are going.

#### Sale of a going concern

A going concern is a business sold "lock, stock and barrel" or is part of a business that can operate independently. The business must be a going concern at the time of sale, right up to the time of the transfer to the buyer.

A supply of goods or services must meet these criteria to be a going concern:

- It must be the supply of the whole or stand-alone part of a taxable activity, from one registered person to another.
- It must be the supply of all the necessary goods and services for the activity to continue.
- Both parties must agree in writing that there is a supply of a going concern.
- Both parties must intend the activity is capable of being carried on as a going concern by the buyer.

The sale is zero-rated for GST if it meets all these criteria.

##### *Example*

Pat, a dairy farmer, sells his dairy farm (including land, herd, all buildings and all machinery) to another GST-registered farmer. This qualifies as the sale of a going concern, if both parties agree.

If Pat had sold the land and buildings but kept the machinery and the herd, it would not qualify as a going concern.

But, if he'd sold parts of the farm that could have been operated separately as a going concern, the sale would be zero-rated.

#### Land transactions

A GST-registered person must zero rate a supply, if the supply wholly or partly includes land, and:

- is made to another registered person, and
- the recipient acquires the goods with the intention of using them for making taxable supplies, and
- it is not intended to be used as a principal place of residence by the recipient or any associated persons.

To be a zero-rated supply, the above conditions for zero-rating must be satisfied at the time of settlement of the transaction. If any of these conditions are not satisfied at the time of settlement, the supply should be taxed at 15%.

Leases for dwellings or commercial leases are excluded from this definition when:

- the supply is made periodically, and
- 25% or less of the total amount is payable in advance or all at once.

## Not eligible for zero-rating

### Services performed in New Zealand for a third party

Services performed under contract to a non-resident who lives outside New Zealand, which are delivered to a third party in New Zealand, aren't eligible for zero-rating.

GST is charged at the standard rate of 15% if supplied to non-residents, but the supply is received in New Zealand.

#### Example

A Singaporean family wants their child to receive a year's education in New Zealand. The parents contract a New Zealand school to supply the tuition.

The supply of the tuition is not zero-rated because the child will receive the tuition in New Zealand.

#### Example

A non-resident tour operator buys accommodation from New Zealand hotels and puts them into travel packages for tours of New Zealand. The travel packages are then sold to non-resident tourists.

The supply of accommodation contracted between New Zealand hotels and the non-resident tour operator isn't zero-rated because it's reasonably foreseeable another person (the non-resident tourist) will receive the services in New Zealand.

## Special supplies

There are special rules for accounting for supplies which are different from normal business sales or purchases.

### Accommodation

The supply of residential accommodation in a dwelling is exempt from GST. However, GST may be included for accommodation in a commercial dwelling. Commercial dwellings include:

- hotels, motels, homestays, farmstays, bed and breakfast establishments, inns, hostels or boarding houses
- some service apartments
- convalescent homes, nursing homes, rest homes or hospice
- camping grounds
- other commercial dwellings.

If your taxable activity is running a commercial dwelling, you can calculate the GST on the accommodation in two ways.

### Four-week rule

#### Commercial dwellings

For the first four weeks' stay, charge GST on the full value of accommodation in the dwellings.


After four weeks, charge GST only on 60% of the value of the domestic goods or services, usually the right to occupy the premises, which may include any of the following:

- cleaning and maintenance
- electricity, gas, air-conditioning or heating
- telephone (not tolls), television, internet, radio or similar chattels.

#### Example

Lauren stays for six weeks at the Comedy Hotel. The GST-exclusive costs are:

42 nights at \$104 per night	\$4,368
Food and laundry	\$1,035

Comedy Hotel 		TAX INVOICE
Lauren Hardie 71 John Street Christchurch		GST No. 987-654-321  08 April 2011
28 days (first four weeks) at \$104 per night	\$2,912.00	
GST (15% of \$2,912.00)	\$436.80	
		\$3,348.80
14 days (after four weeks) at \$104 per night	\$1,456.00	
60% of \$1,456.00	\$873.60	
GST at 15%	\$131.04	\$131.04
		\$1,587.04
Food and laundry	\$1,035.00	
GST at 15%	\$155.25	
		\$1,190.25
<b>Total due</b>		<b>\$6,126.09</b>
Main Street WELLINGTON	PO Box 36 363 WELLINGTON	Phone: (04) 333 6666 FAX: (04) 333 6663

This is what Comedy Hotel needs to show in its GST return:

first 28 days	\$ 436.80
next 14 days	\$ 131.04
food and laundry	\$ 155.25
total GST charged	\$ 723.09

$\$723.09 \times 23 \div 3 = \$5,543.69$  which should be shown in Box 5.

If a joint charge covers all supplies for bed and breakfast, the fully taxable supplies (breakfast) must be identified separately from the domestic goods or services (bed).

### Residential establishment, eg, boarding hostels, resthomes

If you and the guest agree the stay is for longer than four weeks, you must charge GST on 60% of the value of domestic goods or services from the beginning of their stay.

### Advance payments

A supplier who receives advance or progress payments must account for the GST on the payments. These are inducements for a supply of goods, not financial services (which are exempt supplies).

#### Example

**Tina** is a fruit grower. She receives an advance payment from her marketing board and accounts for it like this:

She includes the advance payment in total sales in Box 5 of her GST return in the same period she receives it.

If, for some reason, Tina has to pay back all or part of the advance she received from the marketing board it will be treated as a loan. As a loan, the advance will be exempt from GST because it's a financial service.

Tina should ask us to reassess the return that included the advance payment.

**The marketing board** may claim a GST credit for the advance payment made, as long as they hold the necessary tax invoice.

If the advance is later repaid, it must be included in the total sales (Box 5). Any interest is exempt, because it's a financial service.

**A GST-registered agent** who is involved in the transaction must account for GST on any commission or fee they charge.

### Auctions and auctioneers

Ownership of goods under auction never passes to the auctioneer. Auctioneers sell goods on behalf of others (principals). An auctioneer may not know whether the principals are registered for GST, or whether to charge GST on a particular lot.

The sale of goods on behalf of a non-registered principal isn't taxable. The sale of a registered person's private assets is generally not taxable.

The auctioneer can charge and account for GST as though making the taxable supply, as long as both the principal and the auctioneer agree to this arrangement.

If the principal is registered, the GST-inclusive sale price, less commission, is passed on to the principal who must account for GST. If the principal isn't registered, the auctioneer will pass the GST-exclusive sale price, less commission, on to the principal.

An auctioneer who is registered for GST must account for the GST on fees or commissions.

Auctions may be held on either a GST-inclusive or a GST-exclusive basis. The auctioneer should state this clearly at the beginning of the auction, so the bidders know whether or not their bids include GST.

### Price changes (credit and debit notes)

Sometimes, the price of goods or services will change after you've prepared an invoice or made a payment. Here's what you need to do.

#### Reduction of the agreed price

If you supply goods and services and reduce the price of the supply after issuing an invoice or receiving payment, you must include the amount of the reduction in the taxable period you made it.

This is usually the taxable period when the credit note was issued.

- ▶ If you've already issued a tax invoice, you must always issue a credit note.

The buyer must include the reduction shown on the credit note in the return for the period covering the time of reduction. This is usually the period when the credit note was received.

#### Example

Angela sells cleaning goods to David for \$1,000. David pays Angela \$900 because some goods were damaged. Angela issues a credit note for \$100.

Both David and Angela use the invoice basis.

Angela includes \$1,000 in Box 5 (sales). She claims \$100 in Box 11 (purchases) in the return covering the time when the reduction was made.

If the invoice and credit note were issued in the same period, Angela could have shown the net amount of \$900 in Box 5 instead.

David claims \$1,000 in Box 11 (purchases). He includes \$100 in Box 5 (sales), in the return covering the time when he made the reduction.

If the invoice and credit note were received in the same period, David could claim the next \$900 in Box 11.

#### Increase of the agreed price

If you supply goods or services and increase the price of the supply after issuing an invoice or receiving payment, you must include the amount of the increase in the taxable period which you made it in. This is usually the taxable period when you issued the debit note.

- ▶ If you've already issued a tax invoice, you must issue a debit note for any price increase.

The buyer must include the increase in the return covering the time the increase was made. This is usually the taxable period when the debit note was received.

**Example**

Mary sells goods worth \$1,100 to Keith for \$1,000 by mistake. Mary issues a debit note to Keith for \$100. Both Mary and Keith use the invoice basis.

Mary includes \$1,000 in Box 5 (sales). She includes the extra \$100 in Box 5 in the return covering the period the increase was made.

Keith includes \$1,000 in Box 11 (purchases). He claims \$100 in Box 11 in the return covering the time the increase was made.

**Delayed settlement transactions**

If you're a GST-registered vendor and you enter into a property transaction with a delayed settlement date, you must account for GST using the invoice basis when the price of the property exceeds \$225,000 including GST. You do this for any accounting basis. So, if you're on a payments basis you account for the GST when an invoice is issued or when payment is received, whichever happens earlier settlement is required within a 12-month period.

These exceptions apply if:

- the supply is made under a short-term agreement for the sale and purchase of property—under one year
- the supplier is a non-profit body and at the time of supply, the recipient is not a registered person and is either:
  - not intending to use the goods and services for the purposes of carrying on a taxable activity, or
  - intending to use the goods and services for the purposes of carrying on a taxable activity but only after the full amount for the supply is paid to the supplier.

**Dishonoured cheques**

If a cheque is dishonoured, it's as though the payment wasn't made and you don't account for it. But, if you've already filed your return and it includes a dishonoured cheque and you use the payments basis, please contact us about correcting it—see page 49.

If you use the invoice or hybrid basis, you can only make the correction when it's written off as a bad debt.

**Door-to-door sales**

The time of supply is the first day after the period in which the purchaser may cancel the sale. If you're a door-to-door salesperson, your buyers have either seven days or one month to cancel the sale depending on the cancellation period. You account for the supply in the taxable period covering the day after the final date for cancellation.

**Example**

Selena Wares, a door-to-door salesperson, sells an item on 31 May, the last day of the taxable period. The eighth day after the sale is 8 June. She includes the full price for the supply in the taxable period covering 8 June.

If you purchase from a door-to-door salesperson, you can claim a credit in the taxable period that covers the first day after the cancellation period (provided you hold a tax invoice). This applies even if you get an invoice or make payment before that date.

**Full price not known at the time of supply**

Sometimes, a final price isn't settled until after the goods are physically supplied. If you're selling goods like this and you use the invoice or hybrid basis you include the GST in the earliest period of when you:

- issued an invoice for any part of this supply, or
- have a payment due, or
- received a payment.

**Example**

Andy sells produce to an exporter for a down payment plus an end-of-season catch-up, based on export prices. Andy accounts for the down payment immediately. He accounts for the catch-up payment when it's due, received, or when an invoice is received—whichever is earlier.

If you use the payments basis, you account for the supply when you receive payments. But if you buy goods when you don't know the full price and you use the invoice basis, you claim a credit in the earliest taxable period you:

- receive a tax invoice
- make a payment
- have a payment due.

For purchases under the payments or hybrid basis, claim a credit when you make a payment.

**Gaming machines**

Gaming machine operators must register for and pay gaming machine duty. They must also pay GST on the value of the gaming machine revenue. This is the difference between:

- the increase in metered turnover
- less the increase in metered total wins during a return period.

The amount of any jackpots won during that return period is also deducted from total turnover, if the jackpot figure isn't included in the metered total wins.

When accounting for GST, gaming machine revenue is calculated from the records you're required to keep for the Department of Internal Affairs.

Where your monthly machine analysis reports or cashless gaming machine analysis reports are prepared to coincide with the last day of your taxable periods, you can use them to calculate the gaming machine revenue.

You also pay problem gambling levy (PGL) on gaming machine profits. You can claim back the GST on PGL.

For more information read our *Gaming machine duty (IR 180)* guide.

## Grants and subsidies

Any grant or subsidy you receive from the Crown or a public authority, is considered to include GST if you're registered for GST. Include the full grant or subsidy in Box 5 of your return.

### Example

Helen employs 10 staff. She gets a \$200 wage subsidy each week for eight weeks. The GST content is \$208.69.

$\$200 \times 8$  (weeks)    \$ 1,600.00  
 $\$1,600 \times 3 \div 23$     \$ 208.69

Helen includes \$1,600 as sales in Box 5 of her return.

There is an exception for grants intended for international overseas development. You have to return GST on the portion of the grant allocated for administration and capacity building in New Zealand.

If you receive a government grant or subsidy, you don't normally need to issue a tax invoice. However, if you receive a grant or subsidy, eg, a research grant, from another registered person, they will probably ask you for a tax invoice.

If you pay a grant or subsidy in exchange for taxable supplies, you may request a tax invoice and claim a GST credit.

## Hire purchase agreements

You must account for all hire purchase sales in the taxable period covering the date you enter into the agreement, for all accounting bases.

If you buy goods on hire purchase, you may claim a deduction in the taxable period covering the date you enter into the agreement, for all accounting bases.

### Example

Kay buys a carpet on hire purchase from Supreme Floorings on 7 June. The cash price is \$1,100, which includes GST. The agreement is for 36 monthly payments of \$46, totalling \$1,656.

Supreme Floorings accounts for the sale on the cash price of the goods (\$1,100) in the period covering 7 June. Kay also claims for her purchase on the cash price in the period covering 7 June. The difference of \$556 is the finance charge, which is an exempt supply.

## Insurance

If you get an insurance payment relating to your taxable activity, you must include the GST content as an adjustment in Box 9 of the return which covers the time you received the payment.

### Example

Damien's distilling equipment was damaged by fire on 20 January 2011. An insurance company issued a cheque on 18 March 2011 for \$4,500 to cover the damage.

Damien includes \$586.95 ( $\$4,500 \times 3 \div 23$ ) in Box 9 of the return for the taxable period covering 18 March.

You don't need to account for any insurance or compensation payment received for loss of earnings, eg, accident compensation. The insurer will still charge GST on their premiums for this type of cover.

You don't account for any payment received under a life insurance contract, because the insurer can't charge GST on the premiums.

Some types of insurance premiums are liable for GST (eg, fire and general insurance). A registered insurer may claim deductions for payments to policy holders when they are made. A tax invoice isn't needed.

The insurer will need a tax invoice to deduct any other payments for claims on policies, eg, a payment to a panelbeater for repairs to an insured vehicle.

Insurers can't claim for payments made under life insurance policies.

## Lay-by sales

The time of supply is the date the buyer gets legal possession of the goods. If the sale is cancelled and the seller keeps part of the money, the time of supply is the cancellation.

Include the full cost of a lay-by sale in the taxable period in which the buyer takes ownership of the goods. This is the time of the final payment.

Don't account for the lay-by payments as you receive each one, but wait until you receive the final payment, even if you use the payments basis.

### Example

Sue buys a DVD player on lay-by from The Vision Shop in January 2010. The full price is \$560. Sue pays \$160 as a deposit, and instalments of \$200 in February and March. The DVD player is delivered in April 2010. The Vision Shop accounts for GST in the taxable period covering March, because that's when Sue became the owner.

If a lay-by sale is cancelled and the retailer keeps some of the payments already made (or receives any later payments), they account for this amount in the taxable period which the sale was cancelled in. GST is calculated on the full amount kept, or received later, and it must be included in the return.

### Example

Sue cancels the agreement with The Vision Shop in February 2010 and gets a \$300 refund. She loses \$60 for doing this, which The Vision Shop accounts for in the taxable period covering February.

If you buy goods on lay-by, you may claim a deduction when you have fully paid for them, and you have a tax invoice.

When you cancel a lay-by sale, you may claim  $\frac{3}{23}$  of any cancellation charge made by the supplier, in the same period you cancel the sale, as long as you have a tax invoice.



## Local authority rates

Local authorities are the only GST-registered organisations which charge rates. They use the invoice or hybrid basis to account for rates charged in full.

The time of supply for rates is on the earlier of:

- the date of an instalment notice for a single payment, or
- the due date for payment, or
- the date when payment is received.

Using the payments basis, local authorities account for all rates payments when they're received, whether they are paid in one instalment or several. Registered people may claim GST for rates payments for premises used in a taxable activity.

If you use the invoice basis and you pay your rates in one lump sum, you may claim a GST credit when you make the payment or receive an invoice, whichever comes first. If you pay rates in instalments, you may claim a credit when each instalment is due or paid, whichever comes first.

For the payments and hybrid basis, you claim a credit for rates when you make payment, if you hold a tax invoice.

## Periodic payments and hire agreements

Periodic payments and hire agreements are treated as a series of separate supplies for each period of the agreement. The time of supply is the date payment is due or received, whichever is earlier.

## Private dwellings as part of taxable activity

If a registered person buys a taxable activity that includes a dwelling, it's treated as a separate supply (exempt). To claim a GST credit, the purchaser must prove the principal use of the dwelling is part of the taxable activity. If it isn't, the purchaser can't claim for it.

## Repossessions

When a buyer doesn't keep up their payments in a hire purchase arrangement (debtor), the seller will usually repossess the goods and resell them. The original buyer (not the reposessor) is considered to supply the goods to the new purchaser if there is a forced sale.

If the goods sold are used in a taxable activity, the reposessor must account for GST on goods sold after repossession, unless the reposessor has:

- a written statement from the debtor, or
- reliable information, eg, from the debtor's accountant or solicitor, that the goods wouldn't be a taxable supply if the debtor sold them.

The reposessor will need to file a *Goods and services tax return for goods sold in satisfaction of a debt* (IR 373).

## Example

Brett sells a \$1,200 fridge on hire purchase to Maria for her restaurant. Brett accounts for GST of \$156.52 ( $\$1,200 \times 3 \div 23$ ) in the return covering the period in which the agreement was made.

Maria doesn't keep up the payments.

Brett repossesses the fridge and sells it again. He then files an IR 373. The sale after repossession, and the GST to be accounted for on it, is considered to be made by Maria.

## Sale of interest in a taxable activity

In an unincorporated body, eg, a partnership, joint venture or trust, the body is the registered person, not the individual members.

So, if a member sells an interest in the body, it's a private transaction between two people and not a taxable supply and there's no GST to account for.

## Secondhand goods

For GST, secondhand goods are goods previously used and paid for by someone else, as in the common definition. It doesn't include:

- new goods
- primary produce—unless previously used
- goods supplied under a lease or rental agreement
- livestock
- secondhand goods consisting of any fine metal of any degree of purity.

▶ Land is secondhand goods.

The same rules for GST and tax invoices apply to secondhand goods as for all other goods liable for GST. For more information on how and when to account for GST see page 6.

## Secondhand goods if seller is not GST-registered

If the seller isn't registered for GST or the goods are private (exempt), there will be no tax invoice or GST charged. If the purchaser is GST-registered they can claim a credit for GST purposes.

To do this the purchaser must record:

- the name and address of the supplier
- the date of the purchase
- a description of the goods
- the quantity of the goods
- the price paid.

▶ You'll also need to keep details of the transaction if you're going to make a claim for income tax purposes.

It doesn't matter which accounting basis you use, you must make a payment before you can claim the credit for the purchase.

### Successive supplies and progress payments

The “time of supply” is when a progress payment was made or when an invoice was issued, whichever came first.

Goods or services must be either:

- supplied progressively or periodically, and paid for in the same way, or
- supplied directly in constructing, manufacturing or extending a building, or civil engineering work, with payments made periodically as the work progresses.

If you get progress payments and you use the invoice or hybrid basis, account for the GST in the earliest taxable period a payment is due or received, or when you issue an invoice for that payment only.

For the payments basis, account for GST when you receive payments.

If you're making progress payments under the invoice basis, you may claim a GST credit in the earliest taxable period a payment is due, when you make a payment, or when you get a tax invoice for that instalment.

You claim a credit in the taxable period you make a payment in if you're using the payments or hybrid basis.

### Supplies to associated persons

Special rules apply if you make certain supplies to people closely associated with you, eg, relatives, closely connected associated companies or trusts.

See page 2 for a definition of associated persons.

### Supply to registered associated persons

If you supply goods or services to an associated person who can claim a GST credit for the purchase, you account for GST on the amount received.

#### *Example*

Jones, Smith and Brown, a GST-registered partnership, sells a piano to Lee, a sister of one of the partners. Lee is registered for GST and can claim a GST credit on the purchase. The open (current) market value of the piano is \$2,000, but the sale goes through for \$1,500. The partnership accounts for GST of \$195.65 ( $\$1,500 \times 3 \div 23$ ).

### Supply to unregistered associated persons

If you supply goods or services to an associated person who can't claim a deduction, you must determine the open (current) market value of the supply and account for the market value, or the amount you charged, whichever is the larger amount. Enter this in your return.

In the previous example, if Lee wasn't registered for GST, the partnership would account for GST of \$260.87. This is the \$2,000 market value multiplied by 3 then divided by 23.

Include transactions with associated persons in the return for the taxable period when the supply was made. If you get a payment or issue an invoice before the last date for filing that return, use either the payment date or invoice to work out which taxable period the supply falls in, depending on your accounting basis.

#### *Example*

A partnership has a two-month taxable period. The return for the period ended 30 April is due on 28 May.

The partnership supplies goods with an open (current) market value of \$135 to a non-registered brother of one of the partners on 24 April, and receives payment of \$100 on 16 June. The partnership will account for \$17.61 GST (on the market value of \$135) in the return for the taxable period ended 30 April, because this is the period when the supply was made.

If the partnership had issued an invoice or received payment during May (before the April return was due to be filed), the \$17.61 GST would be included in the return for the taxable period ended 30 June because the invoice or payment would fall in the June period.

### Time of supply between associated persons

Under the invoice basis, you claim a deduction in your return for the taxable period when the supply is made available, removed or performed. However, if you make payment or receive a tax invoice before the last date for filing that return, the date of payment or invoice determines the taxable period.

If you use the payments or hybrid basis, claim the GST as you make payments.

## Tenders

A GST-registered person may call tenders for a future supply of goods or services. The advertisement should state whether the tenders need to include GST.

Occasionally, the person making a tender will have to pay a deposit. There isn't usually any GST on a deposit unless all or part of it is kept for some reason.

## Tokens, stamps and vouchers

There are special rules for the sale of tokens, postage stamps and gift vouchers. The supplier should treat tokens, stamps and vouchers as a supply for GST purposes at the time a customer buys them.

GST can be accounted for when the customer actually exchanges the voucher for the monetary value of the goods or services bought, if both suppliers agree.

### *Example*

A petrol station owner sells an oil company's \$20 petrol voucher to a customer. The petrol station owner collects the \$20 for the oil company and forwards it to them.

The customer gives the voucher to a friend who buys petrol at another petrol station. Because there's an agreement between the petrol stations to return the GST on redemption of the voucher, the second petrol station tells the oil company they have sold petrol (goods) in exchange for a \$20 petrol voucher.

The oil company reimburses the second petrol station owner for the sale, who accounts for the GST on the \$20 by including the total amount of the sale in Box 5 of their GST return.

This option doesn't apply to postage stamps and vouchers sold to a non-resident for services performed in New Zealand. The supplier has to account for GST on these items when the customer buys them.

## Buying tokens, stamps and vouchers

You can claim tokens, stamps and vouchers as an expense when you buy them, according to your accounting basis.

## Part 6 – 1 October 2010 GST rate change

The GST rate increased from 12.5% to 15% on 1 October 2010.

All payments accounted for in your GST returns for periods beginning on or after 1 October 2010 will have GST calculated at 15%, even if they relate to supplies originally invoiced at 12.5%. The GST rate change adjustment made in the GST return that covered 30 September 2010 was a “one-off” adjustment to account for the difference between the 12.5% and 15% GST rates.

No further adjustment is required when a payment is made or received on or after 1 October 2010 for a supply that was invoiced at 12.5%.

### Other adjustments required due to the GST rate change

Adjustments may be required in later GST returns due to the GST rate change. After 1 October 2010, all income and expenses on your GST return will be calculated at 15%, but in some specific situations you'll need to account for GST at the rate of 12.5%.

#### Late claims at GST rate of 12.5%

If you can't claim GST now (eg, no tax invoice) you can claim it in a future period. You can only claim your GST late on expenditure incurred in the previous two years. Exceptions to this two-year rule include:

- inability to get a tax invoice
- disputed payments for expenditure
- mistakenly treating a supply as non-taxable
- clear mistakes or simple oversights.

Usually, you can account for the late claim as a purchase or expense in the GST return which you make the claim in. However, if the original invoice included GST at 12.5%, claiming it in this way would mean the GST component would be incorrectly calculated.

If you're making a late claim after 1 October 2010 for an expense that includes GST at 12.5%, you'll need to include the GST component of the expense as an adjustment on purchases and expenses in the bottom part of your *GST adjustments calculation sheet* (IR 372).

Don't include the amount of the late claim as an expense on your GST return for these late claims.

- ▶ If you reimburse an employee and claim a GST credit after 1 October 2010 for an invoice issued at 12.5%, this is also a late claim. The claim is included as an adjustment in the GST return in the period you make the reimbursement, provided you hold a valid tax invoice.

### Credit and debit notes for invoices at the GST rate of 12.5%

The GST rate on a credit or debit note must be the same as the rate that applied at the time of the original invoice. A credit or debit note issued for a transaction that was originally invoiced at 12.5% must have GST included at the rate of 12.5%.

If you issue or receive a credit or debit note that includes GST at the 12.5% rate, account for the difference between the GST component on the original invoice and the GST component of the credit or debit note as an adjustment in your return.

### Replacement tax invoices

Normally, changes in the price on a previous tax invoice require a credit or debit note to be issued. However, when the original tax invoice was at the GST rate of 12.5%, a replacement tax invoice can be issued instead of:

- a debit note for an increase in price due to the change in the GST rate for successive supplies provided from 1 October 2010. The replacement invoice will include GST at the rate of 15% for payments after 1 October 2010.
- a credit note for a decrease in price if the original invoice was at the GST rate of 12.5%. The difference in GST between the original and replacement invoices will need to be accounted for as an adjustment in the return for the period in which the replacement invoice was issued, in the same manner as a credit note issued at the GST rate of 12.5%.

### Finance lease payments and further GST rate change adjustments

You may be required to make other adjustments due to the change in GST rate if you make or receive payments towards a finance lease entered into before 1 October 2010 or if you made a GST rate change adjustment for qualifying supplies.

See our *GST plus* (IR 546) guide for more information.

## Part 7 – Your rights and obligations

### If you have a complaint about our service

We're committed to providing you with a quality service. If there's a problem, we'd like to know about it and have the chance to fix it. You can call the staff member you've been dealing with or, if you're not satisfied, ask to speak with their team leader/manager. If your complaint is still unresolved you can contact our Complaints Management Service. For more information go to [www.ird.govt.nz](http://www.ird.govt.nz) or call us on 0800 274 138 between 8 am and 5 pm weekdays.

If you disagree with how we've assessed your tax, you may need to follow a formal disputes process. For more information, read our factsheet, *If you disagree with an assessment (IR 778)*.

### Privacy

Meeting your tax obligations means giving us accurate information so we can assess your liabilities or your entitlements under the Acts we administer. We may charge penalties if you don't.

We may also exchange information about you with:

- some government agencies
- another country, if we have an information supply agreement with them
- Statistics New Zealand (for statistical purposes only).

If you ask to see the personal information we hold about you, we'll show you and correct any errors, unless we have a lawful reason not to. Call us on 0800 377 774 for more information. For full details of our privacy policy go to [www.ird.govt.nz](http://www.ird.govt.nz) (keyword: privacy).

### Shortfall penalties

Shortfall penalties are charged on top of any tax, late filing penalties, late payment penalties and interest that may already be payable. The penalty is charged on the amount of any understatement of tax or tax shortfall. There are five categories of fault, each carrying a standard penalty (as a percentage of the tax shortfall).

In addition to these penalties, there could be fines charged and/or imprisonment of up to five years.

In some cases, penalties can be reduced by 50%.

### Audits

We may audit your business from time to time to check how your GST records match up with the information on your GST returns. This is routine Inland Revenue activity and we'll notify you of any upcoming visit.

You're required to keep all financial records of your taxable activity for seven years. Failing to keep adequate GST records is a very serious matter and can result in a fine.

For information about our audit process and your rights and obligations, read our guide *Inland Revenue audits (IR 297)*.

### Offences and penalties

Any registered person who doesn't comply with the tax laws commits an offence and may be prosecuted.

Offences include:

- not registering when you're required to
- failing to file returns, keep records, or supply information and invoices
- supplying false information on your returns, invoices, records and anywhere else in connection with your tax affairs
- failing to deduct and/or account for money owed by a registered person when you're required to
- using money collected to pay GST for other purposes.

For more information read our *Taxpayer obligations, interest and penalties (IR 240)* book.

## Part 8 – Quick reference checklist

Where to find further information about different GST topics.

Topic	For further information
<b>GST registration</b> <ul style="list-style-type: none"> <li>● I'm not registered—how do I know if I should be?</li> <li>● I'm not registered but I'd like to find out more about GST</li> <li>● If I don't have to register for GST, can I do it anyway?</li> <li>● I've registered for GST but I don't know if I needed to</li> </ul>	<a href="http://www.ird.govt.nz/gst">www.ird.govt.nz/gst</a> <i>GST – do I need to register? (IR 365)</i>
<b>Record keeping and paperwork</b> <ul style="list-style-type: none"> <li>● Records to keep</li> <li>● Benefits of good record keeping</li> <li>● How long you need to keep your records for</li> </ul>	<a href="http://www.ird.govt.nz/gst">www.ird.govt.nz/gst</a> <a href="http://www.ird.govt.nz/businesses">www.ird.govt.nz/businesses</a> <a href="http://www.ird.govt.nz">www.ird.govt.nz</a> (keyword: tfb) <i>Smart business (IR 320) guide</i>
<b>Tax invoices</b> <ul style="list-style-type: none"> <li>● What your invoice needs to show</li> <li>● When to issue an invoice</li> </ul>	<a href="http://www.ird.govt.nz/gst">www.ird.govt.nz/gst</a> <a href="http://www.ird.govt.nz/businesses">www.ird.govt.nz/businesses</a> <i>Smart business (IR 320) guide</i>
<b>Expenses and purchases</b> <ul style="list-style-type: none"> <li>● What expenses can I claim in my GST return?</li> <li>● How do I work out my home office expenses?</li> </ul>	<a href="http://www.ird.govt.nz/gst">www.ird.govt.nz/gst</a>
<b>GST calculations</b> <ul style="list-style-type: none"> <li>● How do I add GST to the items I want to sell or the services I provide?</li> </ul>	<a href="http://www.ird.govt.nz/gst">www.ird.govt.nz/gst</a>
<b>Adjustments</b> <ul style="list-style-type: none"> <li>● Other adjustments</li> <li>● How do I account for GST if I'm using items for business and private use?</li> </ul>	<a href="http://www.ird.govt.nz/gst">www.ird.govt.nz/gst</a> <i>GST plus (IR 546) guide</i>
<b>Supplies</b> <ul style="list-style-type: none"> <li>● What are exempt supplies?</li> <li>● What are zero-rated supplies?</li> <li>● Other supplies</li> </ul>	<a href="http://www.ird.govt.nz/gst">www.ird.govt.nz/gst</a> <a href="http://www.ird.govt.nz/businesses">www.ird.govt.nz/businesses</a> <a href="http://www.ird.govt.nz">www.ird.govt.nz</a> (keyword: tfb) <i>GST plus (IR 546) guide</i>
<b>Filing your GST return</b> <ul style="list-style-type: none"> <li>● If I can't pay my GST, should I still file a return?</li> <li>● How do I file my GST return?</li> <li>● Do I need to file a nil return, or can I just call you?</li> <li>● How often do I need to file GST returns?</li> </ul>	<a href="http://www.ird.govt.nz/gst">www.ird.govt.nz/gst</a>
<b>Paying GST</b> <ul style="list-style-type: none"> <li>● When is my GST payment due?</li> <li>● How can I pay my GST? Do I have to send in a cheque?</li> <li>● If I can't afford to pay my GST do I have any options?</li> </ul>	<a href="http://www.ird.govt.nz/gst">www.ird.govt.nz/gst</a> <a href="http://www.ird.govt.nz/how-to/making-payments">www.ird.govt.nz/how-to/making-payments</a> <a href="http://www.ird.govt.nz/how-to/debt">www.ird.govt.nz/how-to/debt</a>
<b>Due dates</b> <ul style="list-style-type: none"> <li>● Filing due date</li> <li>● Payment due date</li> </ul>	<a href="http://www.ird.govt.nz/gst">www.ird.govt.nz/gst</a>
<b>Cancelling GST</b> <ul style="list-style-type: none"> <li>● When can I cancel my GST registration?</li> <li>● How do I cancel my registration?</li> <li>● What happens if I keep business assets after I've closed down my business?</li> </ul>	<a href="http://www.ird.govt.nz/gst">www.ird.govt.nz/gst</a> <a href="http://www.ird.govt.nz/businesses">www.ird.govt.nz/businesses</a> <a href="http://www.ird.govt.nz">www.ird.govt.nz</a> (keyword: tfb)

## Part 9 – Services you may need

### 0800 self-service numbers

This service is available seven days a week (any time, except between 5 am and 6 am) for a range of self-service options. Remember to have your IRD number with you when you call.

For personal information, such as account balances, you'll also need a personal identification number (PIN). You can get a PIN by calling 0800 257 777 and following the step-by-step instructions.

Order publications and taxpacks	0800 257 773
Request a summary of earnings	0800 257 778
Request a personal tax summary	0800 257 444
Confirm a personal tax summary	0800 257 771
All other services	0800 257 777

### Business tax information officers and kaitakawaenga Māori

Business tax information officers (BTIOs) offer a free business tax information service to new businesses and organisations to help them meet their tax responsibilities. This service is available to individuals and groups.

Most of our offices also have a kaitakawaenga Māori who can advise Māori organisations and individuals on their tax responsibilities. Our BTIOs and kaitakawaenga Māori will tell you:

- which taxes you need to know about
- what records you need to keep
- how to complete your tax returns (eg, GST and employer returns)
- when to file returns and make payments.

Find out more about these services and our free seminars at [www.ird.govt.nz](http://www.ird.govt.nz) or by calling us on 0800 377 774.

### Business Tax Update

Get all your business tax news in one newsletter. Our *Business Tax Update*, available online only, gives you tax updates on payroll, GST, FBT and other relevant tax issues. Subscribe through the newsletter page at [www.ird.govt.nz/subscribe](http://www.ird.govt.nz/subscribe) and we'll send you an email when each issue is published.

### Tax Information Bulletin (TIB)

The TIB is our monthly publication containing detailed technical information about all tax changes. You can find it on [www.ird.govt.nz](http://www.ird.govt.nz) under "Newsletters and bulletins" and subscribe to receive an email when each issue is published on our website.

### How to make payments

You can make payments:

- electronically
- by post – **but never send cash**
- at a Westpac branch
- by using our drop box
- by credit or debit card.

Electronic payments are made through your bank by:

- automatic payment
- online banking
- direct credit.

If you make electronic payments, include:

- your IRD number
- a tax type code, eg, INC for income tax
- the period payment is for.

### Paying online by credit or debit card

You can also make all your online payments by credit or debit card. Our bank, Westpac New Zealand, charges a 1.42% convenience fee on each transaction. You won't have to pay this fee if you're making overseas payments for a student loan or non-custodial child support.

For full details on payment options go to [www.ird.govt.nz](http://www.ird.govt.nz) (keywords: making payments) or read our guide *Making payments (IR 584)*.

## Need to talk to us?

### Personal tax enquiries

General tax, tax credits and refunds	0800 227 774
Working for families tax credits and payments	0800 227 773
Payment options	0800 227 771
Paid parental leave	0800 377 777
Child support (8 am to 6 pm Monday to Friday)	0800 221 221
Student loan	0800 377 778

### Business tax enquiries

General tax, tax credits and refunds	0800 377 774
Employers	0800 377 772
GST	0800 377 776
Large enterprises	0800 443 773

### Mobile or international callers

Free calling doesn't apply to mobile phones or international calls for other tax enquiries.

For direct dial numbers go to [www.ird.govt.nz](http://www.ird.govt.nz)

### Passwords – individuals only

Want a password on your account to save you time when calling?

Personal tax customers	0800 227 774
Business tax customers	0800 377 778

### Complaints Management Service

(8 am to 5 pm Monday to Friday) 0800 274 138

We're here to take your call between 8 am and 8 pm Monday to Friday and Saturday between 9 am and 1 pm (unless other times are shown). Remember to have your IRD number with you when you call.

## Customer service quality monitoring

As part of our commitment to providing you with a quality service, we record all phone calls to and from our contact centres. Find out more about this policy or how to access your recorded information at [www.ird.govt.nz](http://www.ird.govt.nz)

## Postal addresses

### Payments

Inland Revenue  
PO Box 39050  
Wellington Mail Centre  
Lower Hutt 5045

### Returns

Inland Revenue  
PO Box 39090  
Wellington Mail Centre  
Lower Hutt 5045

### General correspondence

Inland Revenue  
PO Box 39010  
Wellington Mail Centre  
Lower Hutt 5045

For a full list of addresses go to [www.ird.govt.nz](http://www.ird.govt.nz) (keywords: contact us).



## Index

Accommodation	37	Completing GST returns	10
Accounting basis		Contact centre phone numbers	48
—changing	6	Consideration	2
—hybrid basis	6	Correcting an error	21
—invoice basis	6	Credit notes	18, 38
—options	6	—changes in price	38
—payments or cash basis	6	Customer service quality monitoring	48
Adjustments	2, 18, 25, 46	Debit notes	18, 38
—assets kept after you cease to be registered	24	—changes in price	38
—bad debts recovered	31	Default assessment	21
—bad debts written off	35	Delayed settlement transactions	39
—barter	31	Direct credit and electronic payments	47
—calculation sheet	19	Dishonoured cheques	39
—capital or asset items (from 1 April 2011)	25	Disputes (see Correcting an error in your GST return)	21
capital or asset items (prior to 1 April 2011) go to <a href="http://www.ird.govt.nz/gst">www.ird.govt.nz/gst</a>		Door-to-door sales	39
—cellphones	34	Due dates	46
—entertainment expenses	33	Electronic (online) filing	11
—fringe benefits	32	Electronic payments (see How to make payments)	47
—goods and services used in making exempt supplies	34	Entertainment expenses	33
—home office expenses	32	Exempt supplies	7, 36, 46
—insurance payments received	31	—penalty interest	36
—New Zealand Customs invoices	31	—renting a residential dwelling	36
—telephone expenses	34	—residential accommodation under head lease	36
Advance payments	38	Expenses	
Apportionments	2	—GST on purchases and expenses	5
Assets		—working out GST	5
—purchased from 1 April 2011	25	Expense items	33, 46
—purchased prior to 1 April 2011 – go to <a href="http://www.ird.govt.nz/gst">www.ird.govt.nz/gst</a>		Exports (zero-rated supplies)	7
Associated persons	2	Filing GST returns	6, 10, 11, 20, 46
Auctions and auctioneers	38	—late filing a return	20
Audits	45	—not filing a return (see Offences and penalties)	45
Bad debts written off	35	Financial services (exempt supplies)	7
Bad debts recovered	31	Finding more information	2, 46
Barter	31	Forms and guides	2
Basic GST requirements	6	Forms (GST)	
Business tax information service	47	—GST 101A	12, 13
Business Tax Update newsletter	47	—GST 103	14, 16
Calculating GST	5, 46	—GST 103B	15, 17
Calculation sheet (adjustments)	19	Fringe benefits	32
Cancelling GST	23, 46	Full price not known at the time of supply	39
—assets kept	24	Gaming machines	39
Cash basis of accounting (payments basis)	6	Gift vouchers (see Tokens, stamps and vouchers)	43
Cashbook example	8	Going concern	36
Ceasing registration	23	GST adjustment sheet	19
—assets kept	24	Grants and subsidies	40
Cellphones	34	GST calculation	5, 46
Changes in price	38	GST rate increase	4, 44
—credit and debit notes	18, 38	Hire purchase agreements	40
Cheques dishonoured	39	Home office expenses	32
Cheque payments (see How to make payments)	47	Home	
Common items with GST	20	—renting a residential dwelling	36
Common items without GST	20	How to calculate GST	5
Common mistakes	20	Hybrid basis of accounting	6
Complaints Management Service	48	Increase in price	38
		—debit notes	18

Income and sales		Rates (local authority)	41
—GST on sales and income	5, 26	Record keeping	7, 21, 46
—working out GST	5	Recovery of bad debt	31
Insurance payments received	31, 40	Reducing price (see Price changes)	38
Interest on late payments	21, 22	—credit notes	18, 38
Internet sales	36	Registration	4, 46
Invoices	9, 46	—cancellation	23
Invoice basis of accounting	6	Registered person	2
Kaitakawaenga Māori	47	Relatives (associated persons)	2
Keeping records	7, 21	Renting a residential dwelling	36
Late claim of GST (see correcting an error in your GST return)		Repossessions	41
Late payment penalties	21, 22	Residence —renting a residential dwelling	36
Late Payment Interest	21, 22	Residential accommodation under head lease	36
Lay-by sales	40	Restraint of trade	36
Life insurance (see Insurance)	31, 39	Return (verb)	2
Local authority rates	41	Return filing process	10, 11, 20
Loss of earnings insurance (see Insurance)	40	Returns for GST	
Machines		—accounting basis	6
—gaming	39	—calculation sheet	19
Market value	2	—cashbook	8
Milk tokens (see Tokens, stamps and vouchers)	43	—completing	10
Mistakes (see Correcting an error in your GST return)	21	—default assessments	21
More information	2, 46	—electronic filing	11, 20
Newsletter - Business Tax Update	47	—GST return (GST 101 A)	12
New Zealand Customs invoices	31	—GST and provisional tax return (GST 103)	14
Nil balances (see Questions about filing)	20	—nil balances	20
Not filing your GST return	20	—notice of assessment	21
Notice of assessment (see Correcting an error in your GST return)	21	—taxable period	6
Offences and penalties	45	—ways to pay (see How to make payments)	47
Office in the home	32	Revenue account	2
One-month taxable period	6	Sales and income	
Online filing of returns	11, 20	—GST on sales and income	5
Online return demo	11	—working out GST	5
Paying GST stration	46, 47	Sale of a going concern	36
—arrangements	20	Sale of an interest in a taxable activity	41
Payments basis of accounting	6	Sales by auction (see Auctions and auctioneers)	38
Penalty interest	21, 22	Sales to associated persons (see Supplies to associated persons)	42
Penalties		Sales to associated registered persons (see Supplies to associated persons)	42
—late filing	20	Secondhand goods	41
—late payment	21, 22	—if seller is not GST-registered	41
—offences and penalties	45	Self-service phone numbers	47, 48
—shortfall penalties	45	Services performed in New Zealand for a third party	37
Periodic payments and hire agreements	41	Shortfall penalties	45
Phone numbers for contact centre	48	Six-month taxable period	6
Postage stamps (see Tokens, stamps and vouchers)	43	Special supplies	
Postal addresses	48	—accommodation	37
Price not known at time of supply	39	—advanced payments	38
Privacy Act	45	—auctions and auctioneers	38
Private dwelling as part of taxable activity	41	—price changes (credit and debit notes)	38
Progress payments (see Successive supplies)	42	—delayed settlement transactions	39
Purchases		—dishonoured cheques	39
—GST on purchases and expenses	5	—door-to-door sales	39
—working out GST	5	—full price not known at the time of supply	39

—grants and subsidies	40	Time of supply between associated persons	42
—gaming machines	39	Thresholds	
—hire purchase agreements	40	—accounting basis	6
—insurance	40	—registration	23
—lay-by sales	40	—taxable periods	6
—local authority rates	41	Tokens	43
—periodic payments and hire agreements	41	Trade-ins (see Barter)	31
—private dwellings as part of taxable activity	41	Tool for business	2
—repossessions	41	Turnover	2
—sale of interest in a taxable activity	41	Two-month taxable period	6
—secondhand goods	41	Vouchers (see Tokens, stamps and vouchers)	43
—secondhand goods if seller not GST-registered	41	Website	2, 46
—successive supplies and progress payments	42	What GST is charged on	5
—supplies to associated persons	42	What GST isn't charged on	7
—supply to registered associated persons	42	What do I give my customers	9
—supply to unregistered associated persons	42	Zero-rated supplies	7, 36
—time of supply between associated persons	42	—internet sales	36
—tenders	43	—restraint of trade	36
—tokens, stamps and vouchers	43	—sale of going concern	36
Stamps (see Tokens, stamps and vouchers)	43	Zero-rating (not eligible)	37
Subsidies (see Grants and subsidies)	40		
Successive supplies	42		
Supplies	36, 46		
—associated persons	2		
—exempt	36		
—registered associated person	42		
—special	37		
—taxable	2		
—unregistered associate person	42		
—zero-rated	36		
Tax adjustments (see Adjustments)	2, 18, 25		
Tax Information Bulletin (TIB)	47		
Tax invoices	2, 9, 46		
Tax not paid by due date	21, 22		
Tax to pay			
—offences and penalties	45		
—late payment penalties	21, 22		
Taxable activity	2		
Taxable periods	6		
Taxable supplies	2, 36		
Telephone expenses	34		
Tenders	43		
Terms we use	2		
—adjustments	2		
—apportionment	2		
—associated person	2		
—consideration	2		
—market value	2		
—registered person	2		
—return (verb)	2		
—revenue Account	2		
—tax Invoice	2		
—taxable activity	2		
—taxable supplies	2		
—turnover	2		